



KADAVU

കടവ്

# SITE LOCATION

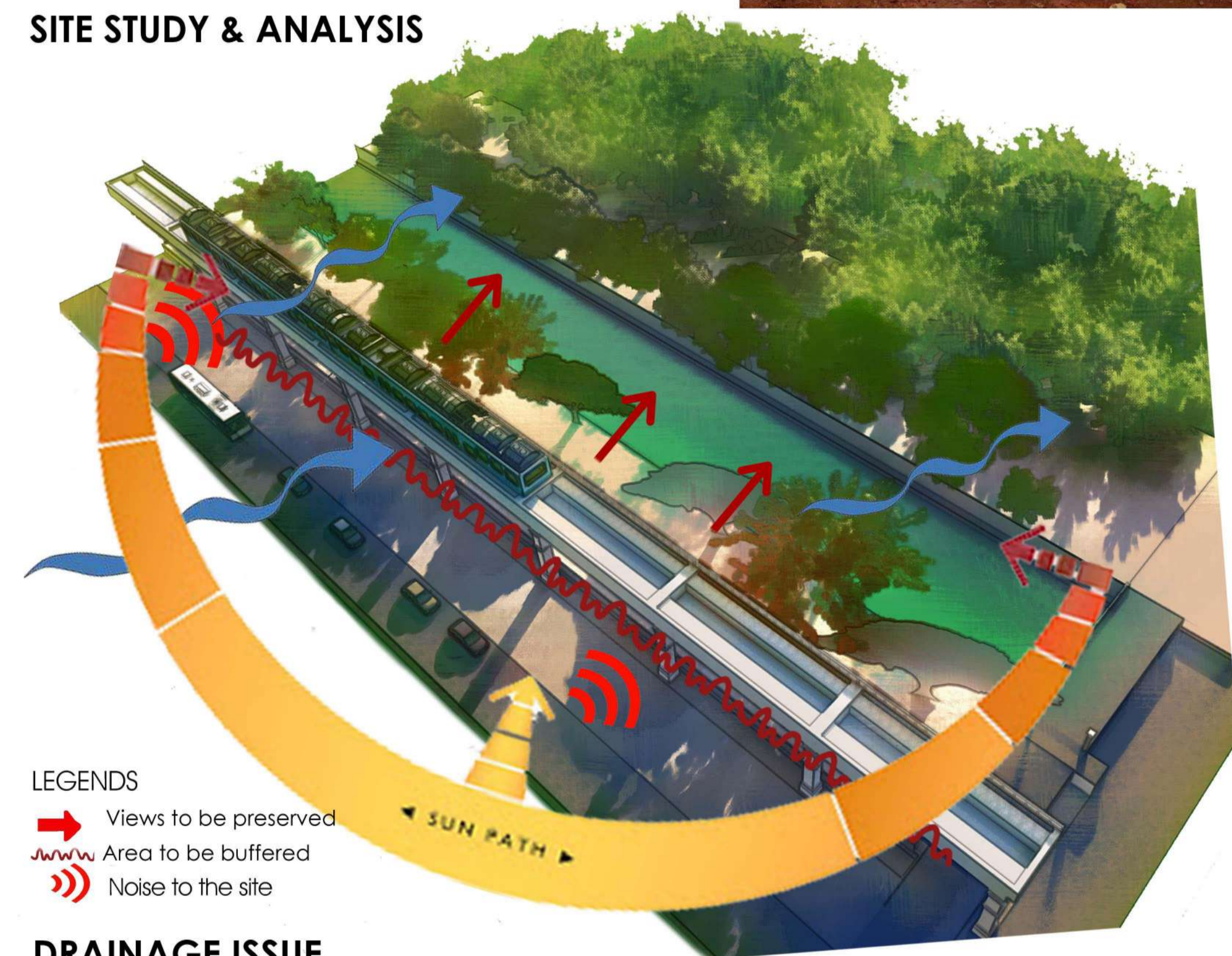
## Brief description of Site

Design typology - Park/recreational space  
 Site area - 37 cents  
 Site is located at Thykoodam, Ernakulam. Site faces towards the Kaniyampuzha river.

### SITE PHOTOS



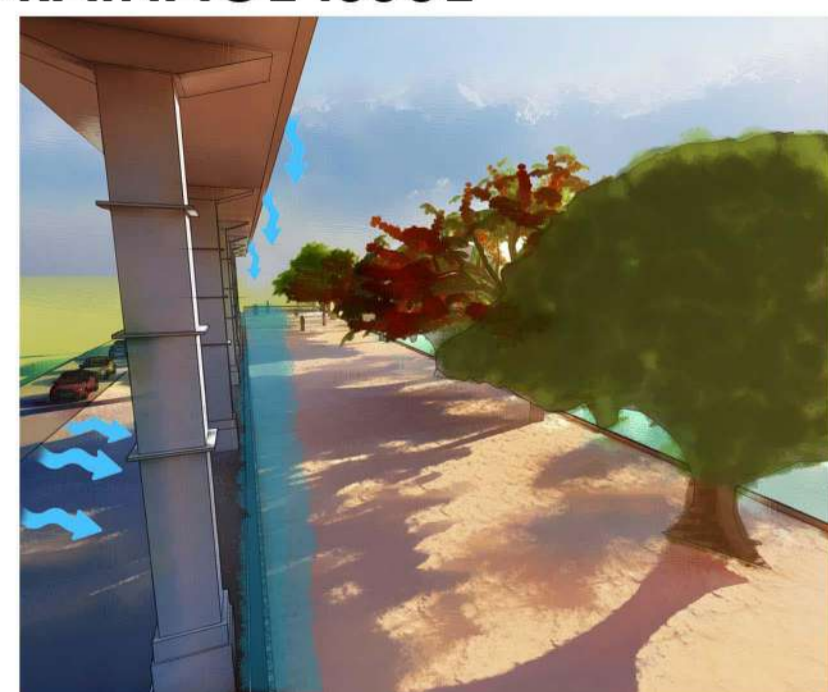
# SITE STUDY & ANALYSIS



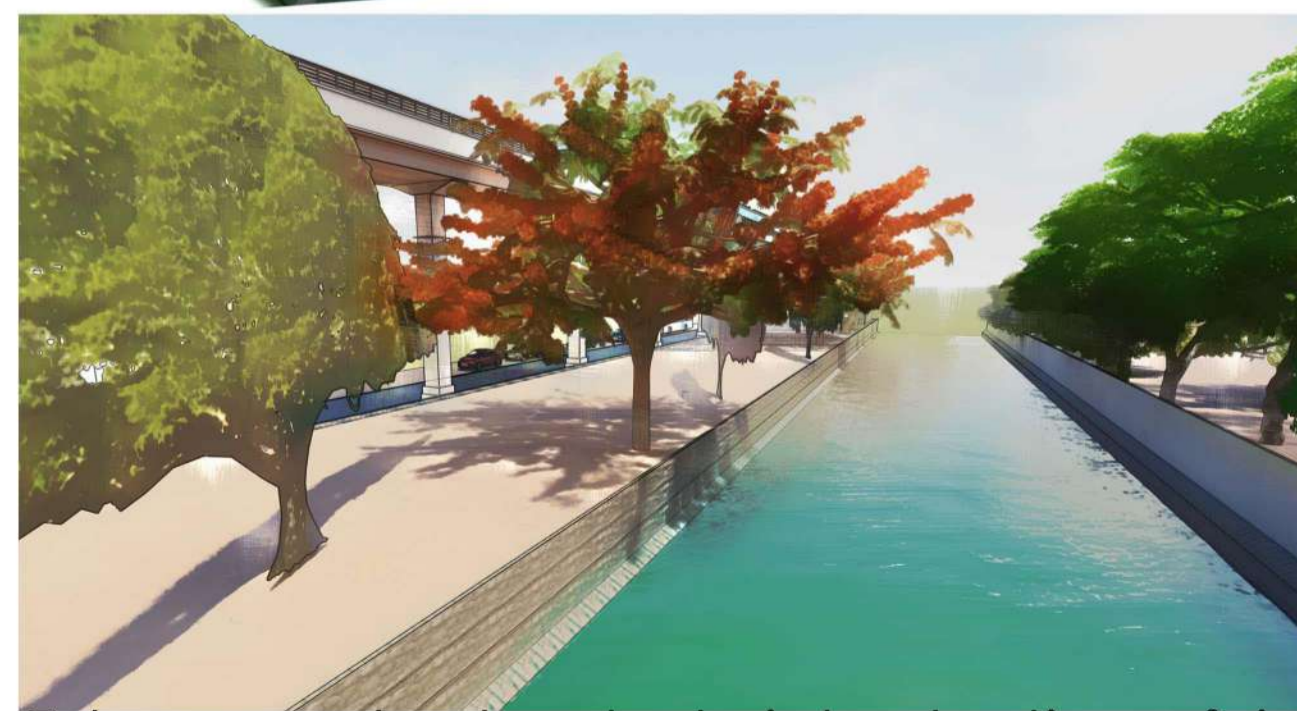
### LEGENDS

- Views to be preserved
- ~ Area to be buffered
- 📶 Noise to the site

### DRAINAGE ISSUE



Water inflow towards site

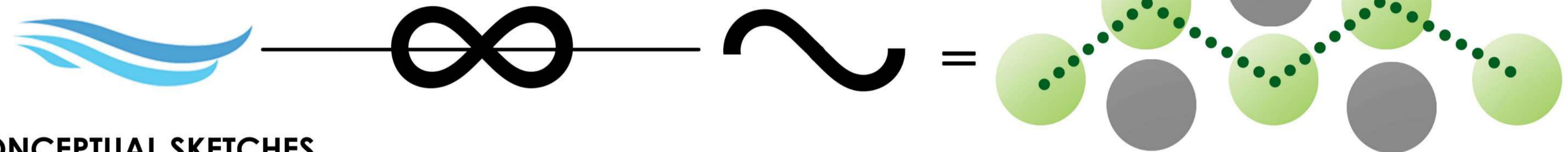


Edges can be treated - introduction of riparian edges

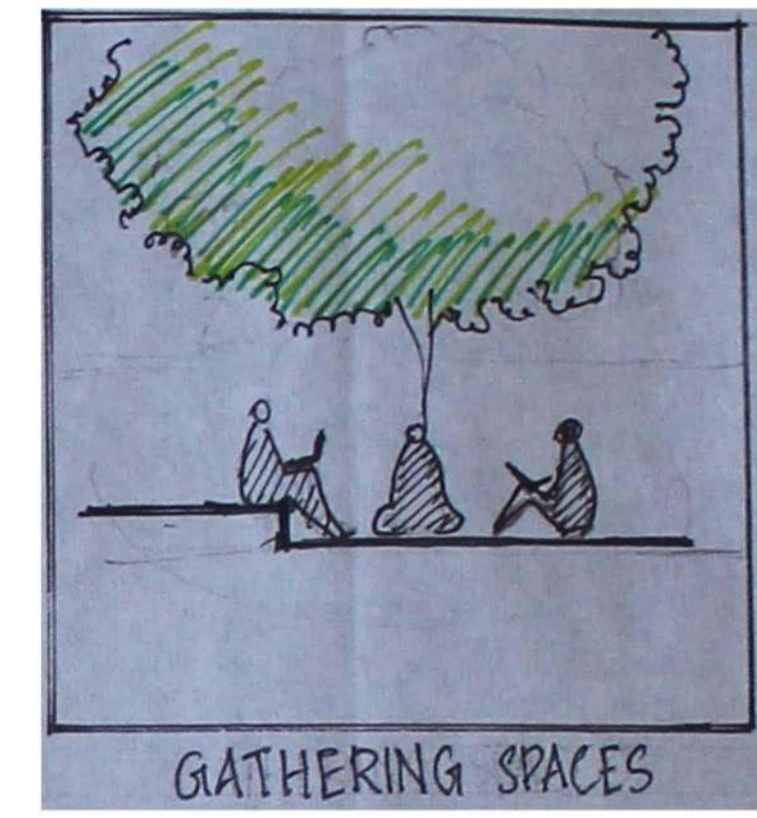
# CONCEPT

- BREATHING SPACE
- MIX OF HARDSCAPE AND SOFTSCAPE
- HABITAT RESTORATION
- CONCRETE JUNGLE
- NATURE INFUSED OPEN SPACE
- USE OF NATIVE SPECIES

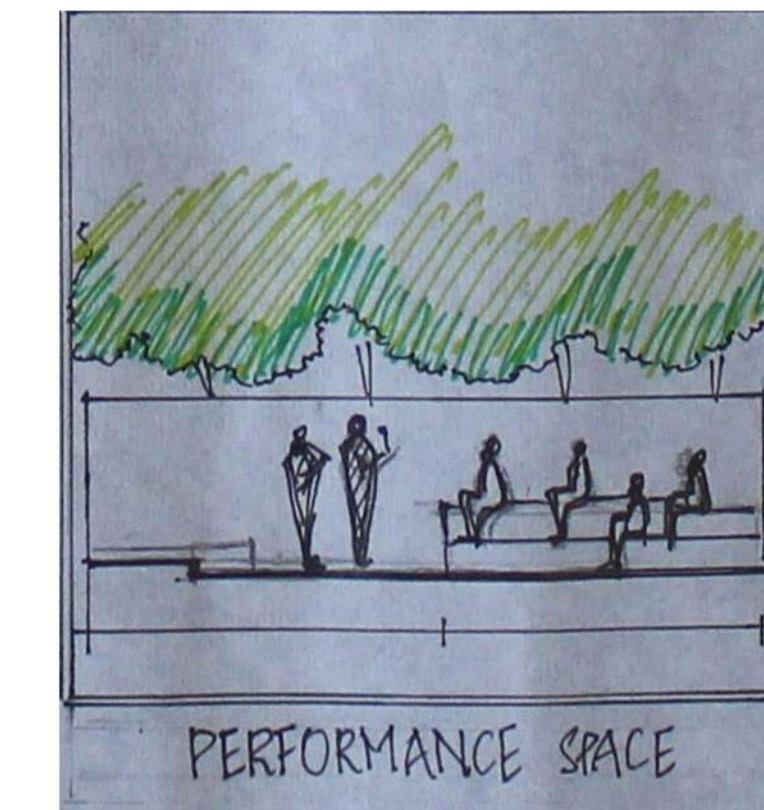
As the site is adjacent to a waterbody a wave form has been adapted for the planning which also symbolises infinity, as nature has got infinite powers.



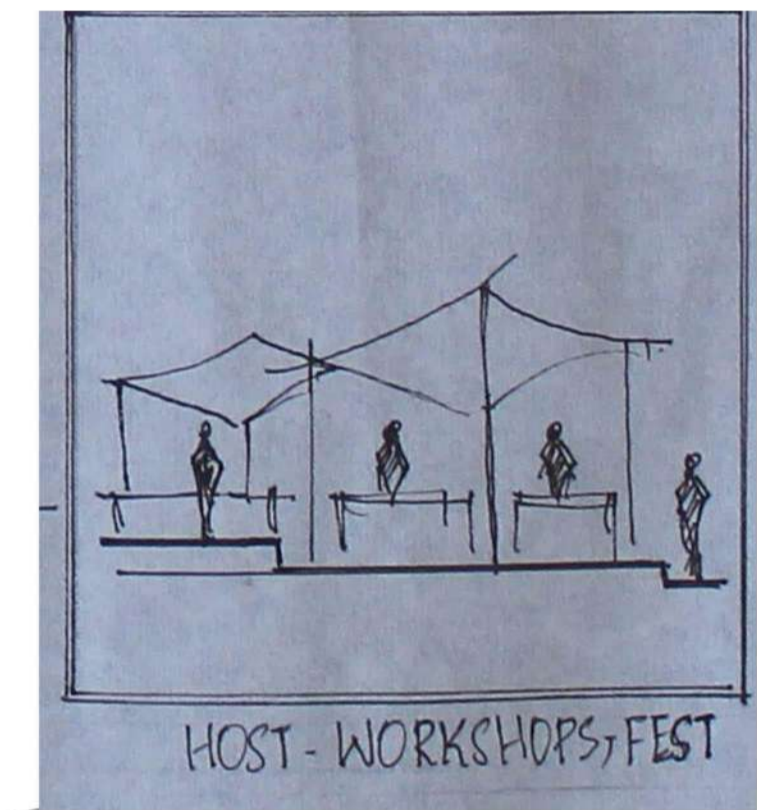
MEANDERING PATHWAYS



GATHERING SPACES



PERFORMANCE SPACE



HOST - WORKSHOPS, FEST

## CONCEPTUAL SKETCHES



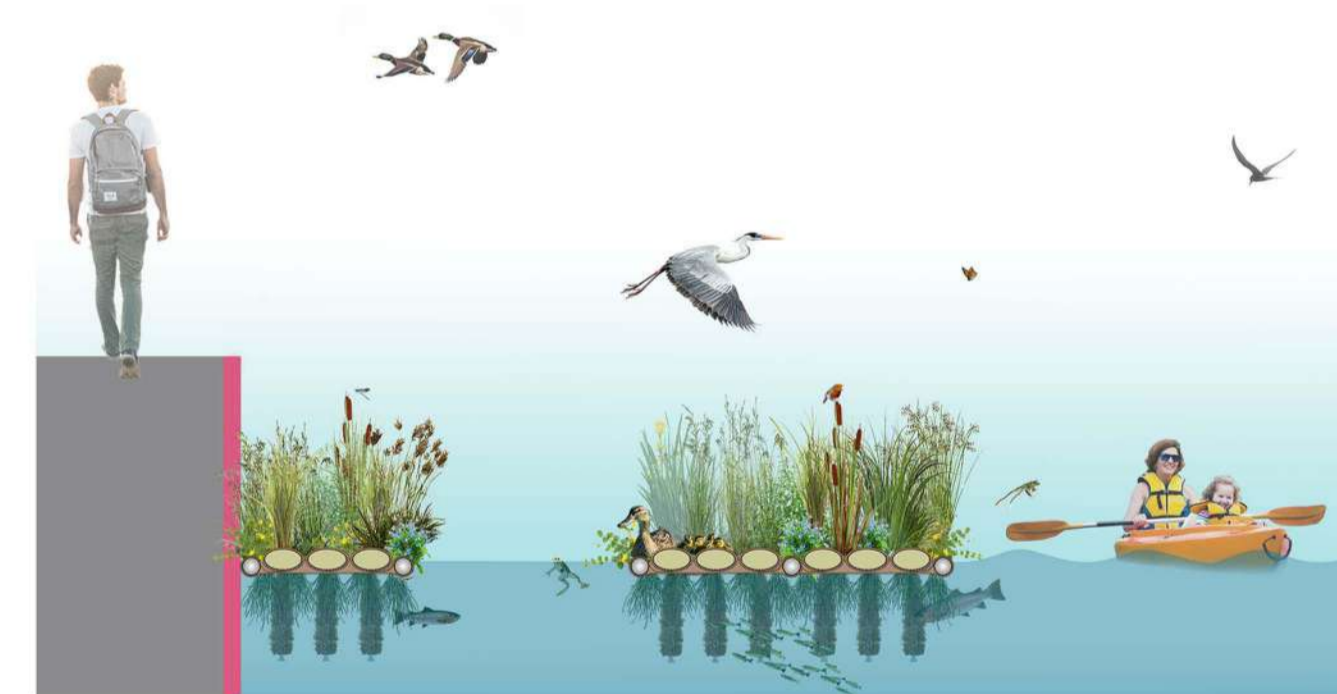
### RIPARIAN EDGE

Riparian edges help to reduce stream bank erosion and maintain stable stream channel geomorphology.

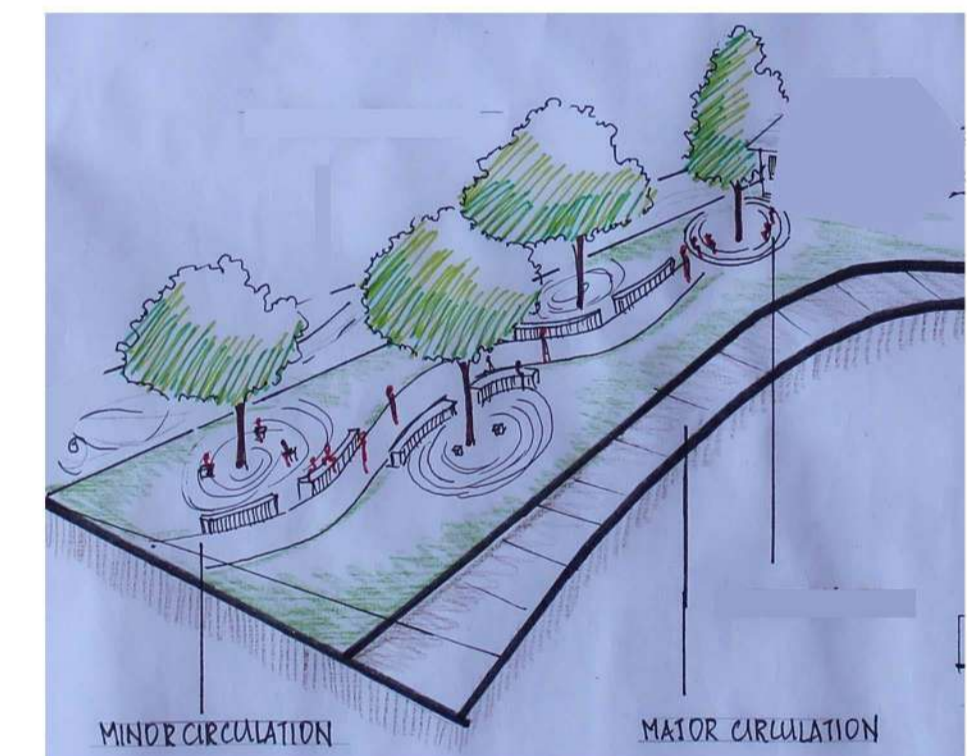


### USE OF BIO-SWALES

Bio-swale provided as alternative to storm sewers. These infiltration strips act as a layer between the site and metro rails. Thus runoff water from metro rails falls into this strip.



### USE OF FLOATING ISLANDS WHICH WILL HELP IN PHYTOREMEDIATION



### MEANDERING PATHWAYS



### HABITAT CORRIDORS

Birds perching and nesting spaces provided on Metro Pillars. Bird attracting trees can be provided in medians which attract birds and act as a habitat corridor for birds and butterflies.

# SITE STUDY & CONCEPT

കടവ്

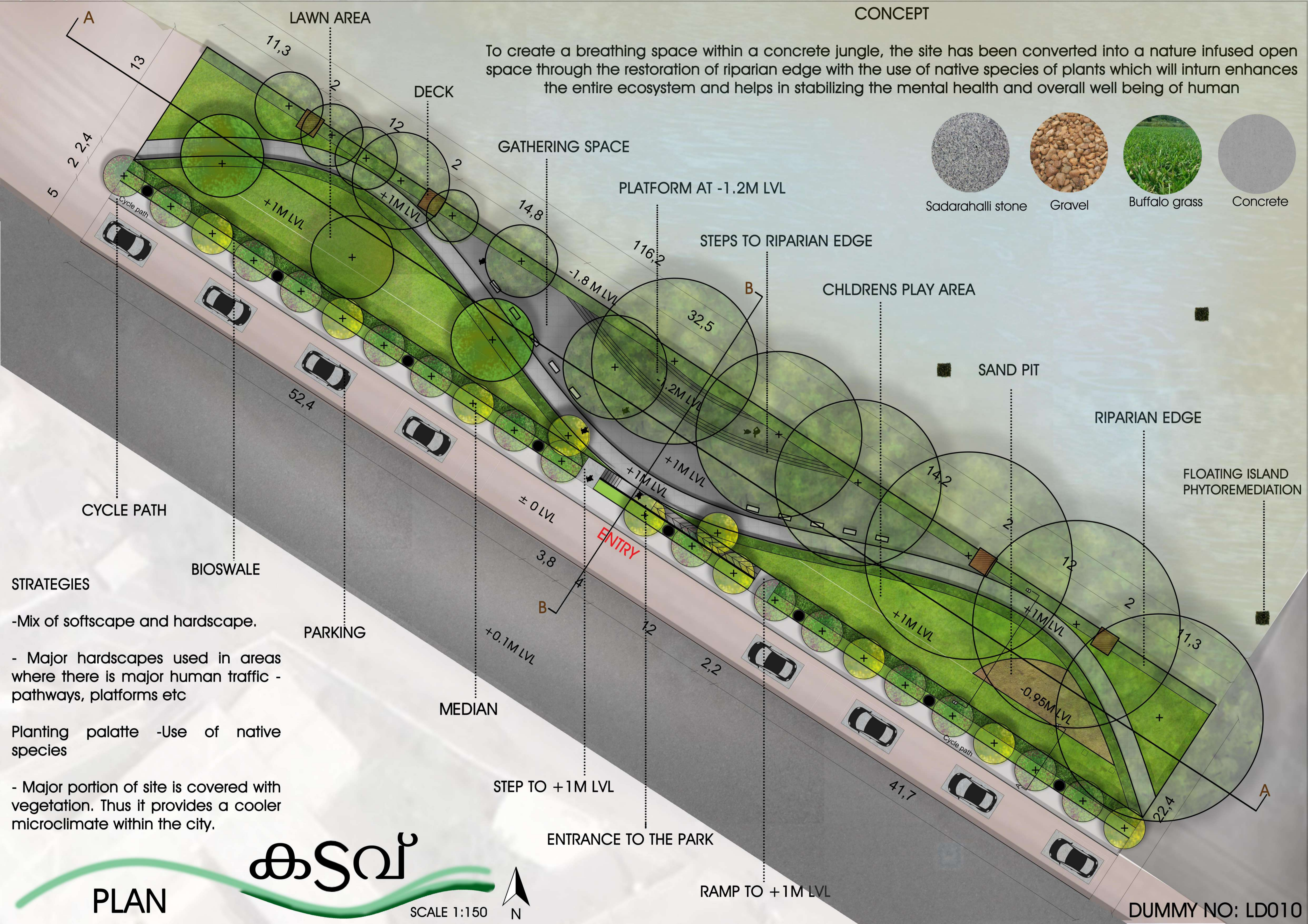
### ACTIVITIES INVOLVED



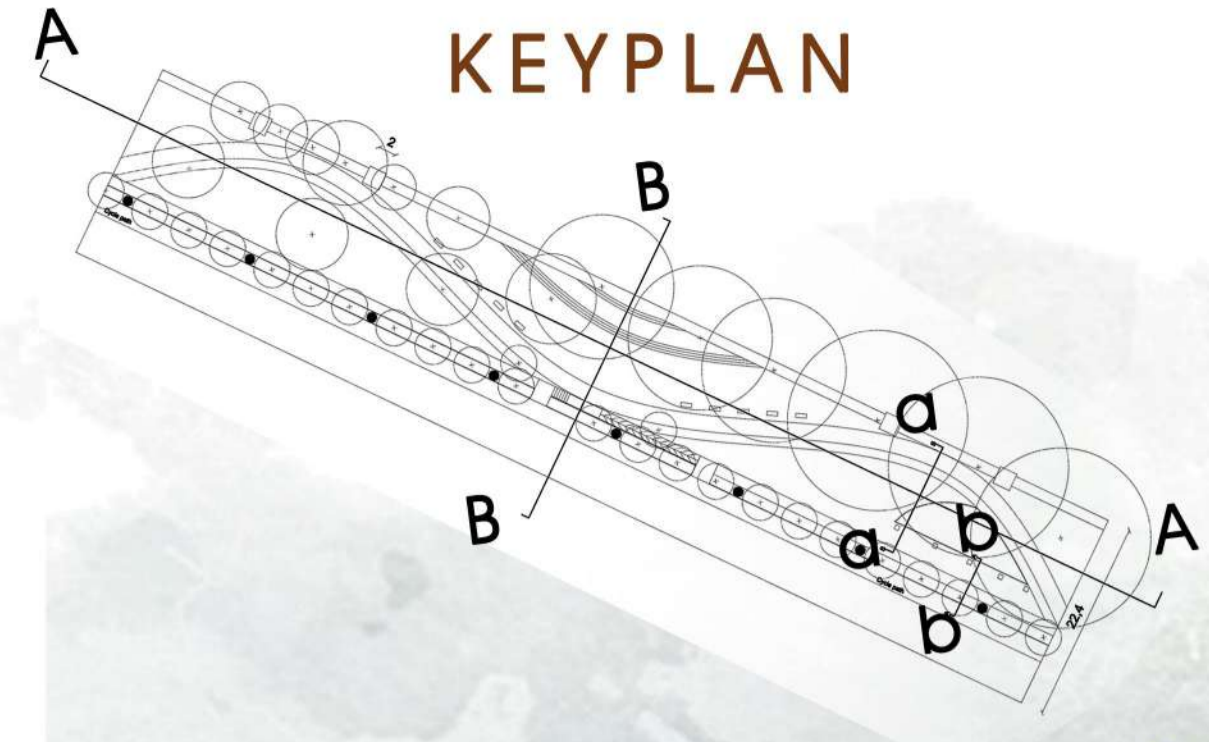
DUMMY NO:LD010

CONCEPT

To create a breathing space within a concrete jungle, the site has been converted into a nature infused open space through the restoration of riparian edge with the use of native species of plants which will inturn enhances the entire ecosystem and helps in stabilizing the mental health and overall well being of human



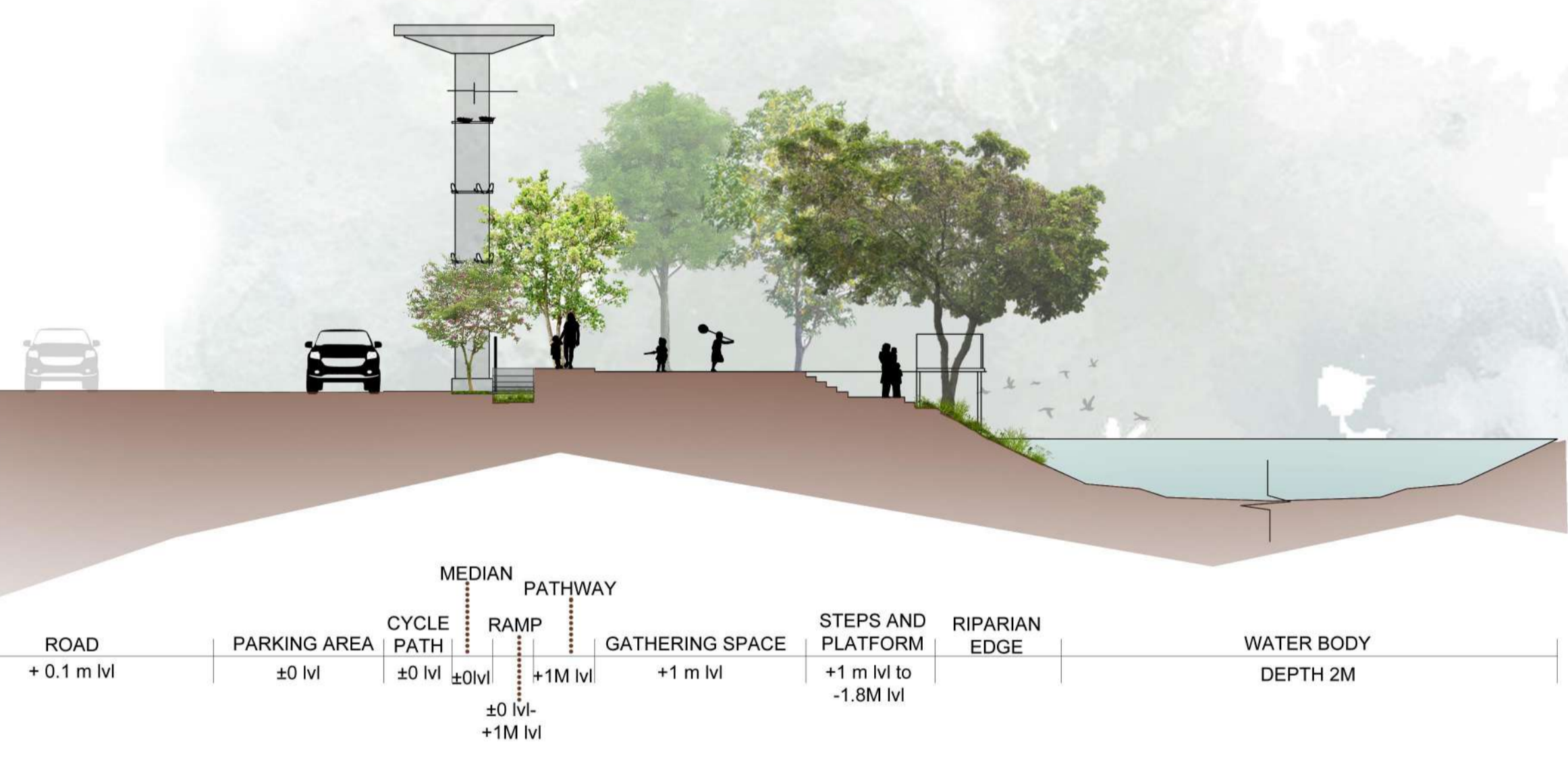
- STRATEGIES**
- Mix of softscape and hardscape.
  - Major hardscapes used in areas where there is major human traffic - pathways, platforms etc
- Planting palatte -Use of native species**
- Major portion of site is covered with vegetation. Thus it provides a cooler microclimate within the city.



**KEYPLAN**

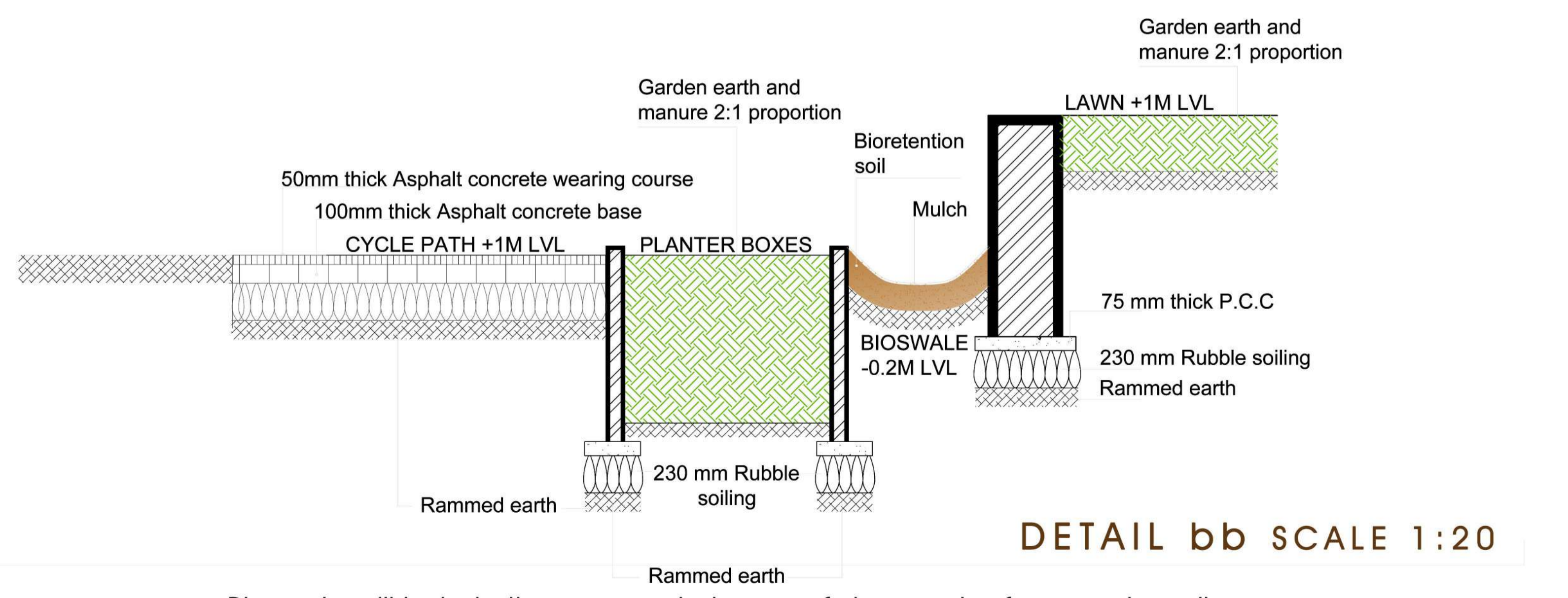
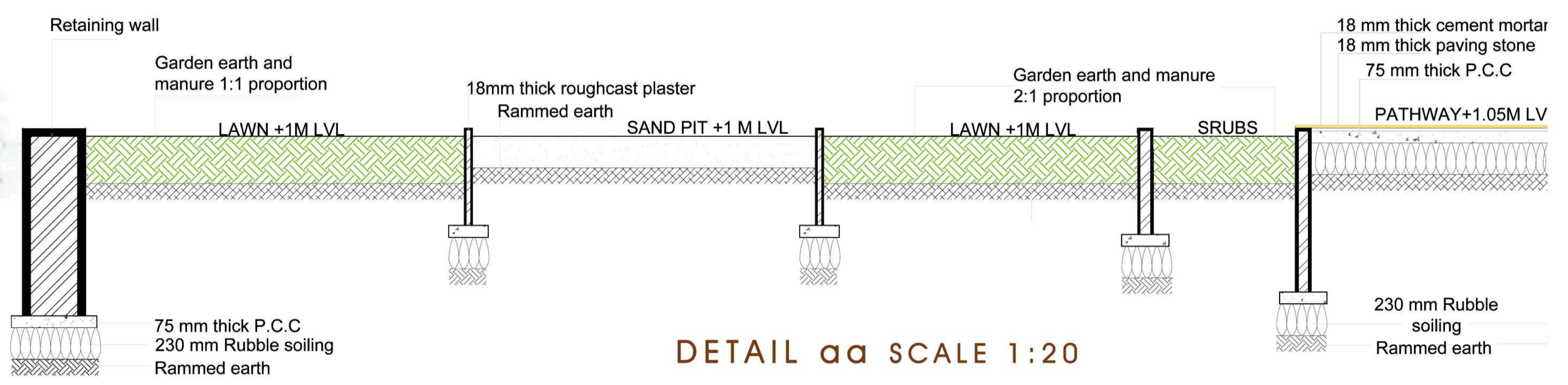
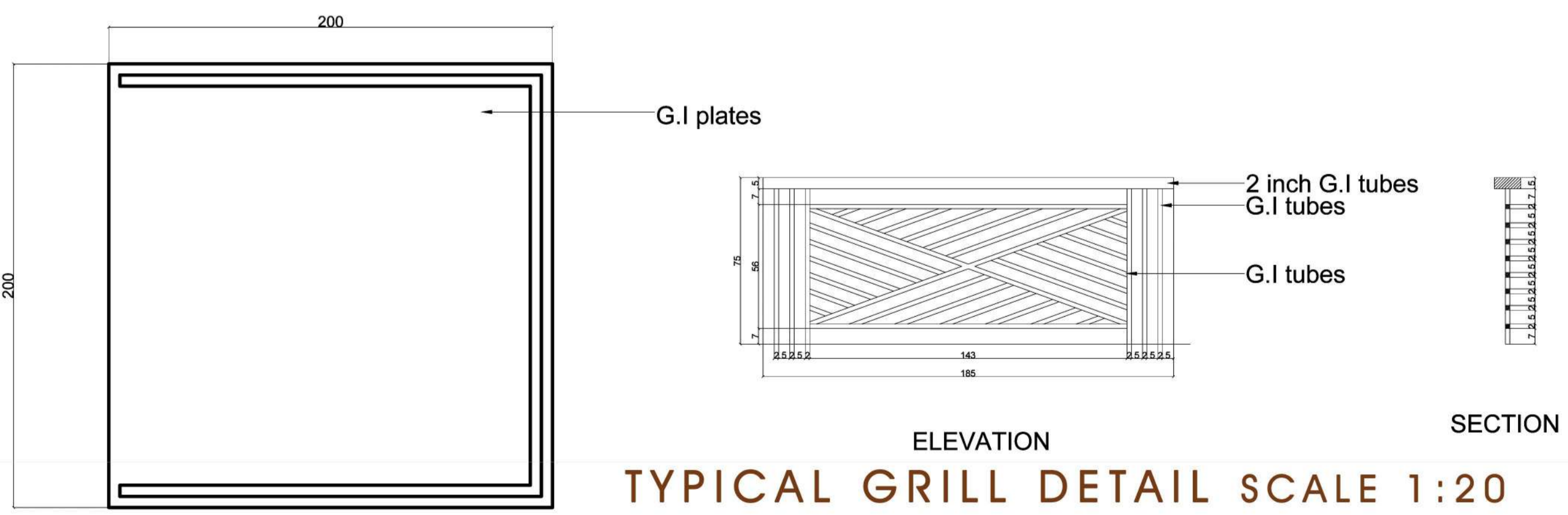


**SECTION AA SCALE 1:150**



**SECTION BB SCALE 1:150**

To facilitate proper infiltration bioswale has been provided and the riparian edge has been restored for proper drainage of water and habitat conservation



Bioswale will help in the proper drainage of stormwater from metro rails



ENTRANCE TO THE PARK



MEANDERING PATHWAYS THROUGH THE PARK



HARDSCAPED GATHERING SPACES



SHADED LAWN AREAS



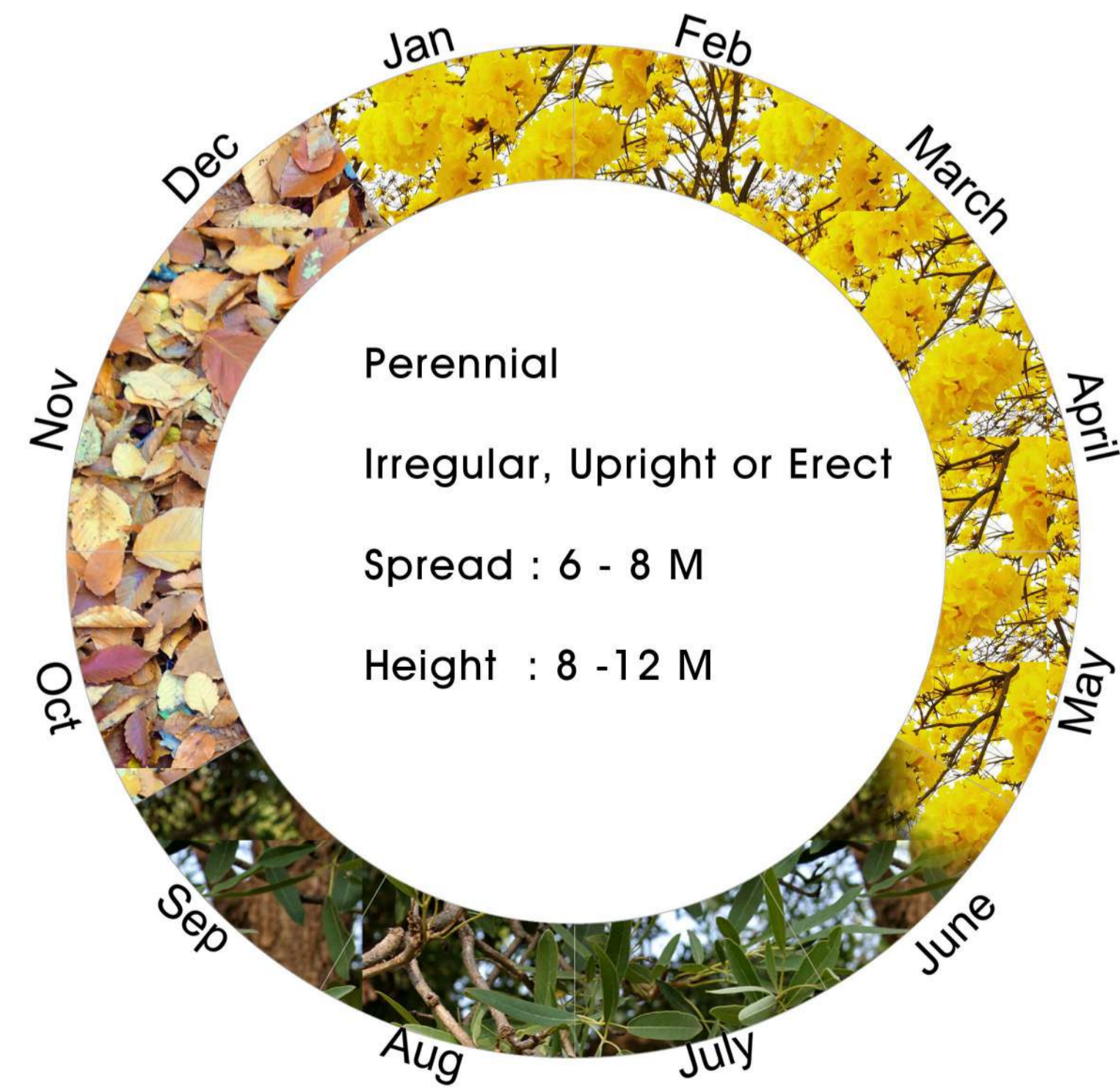
PLAY AREA FOR CHILDREN



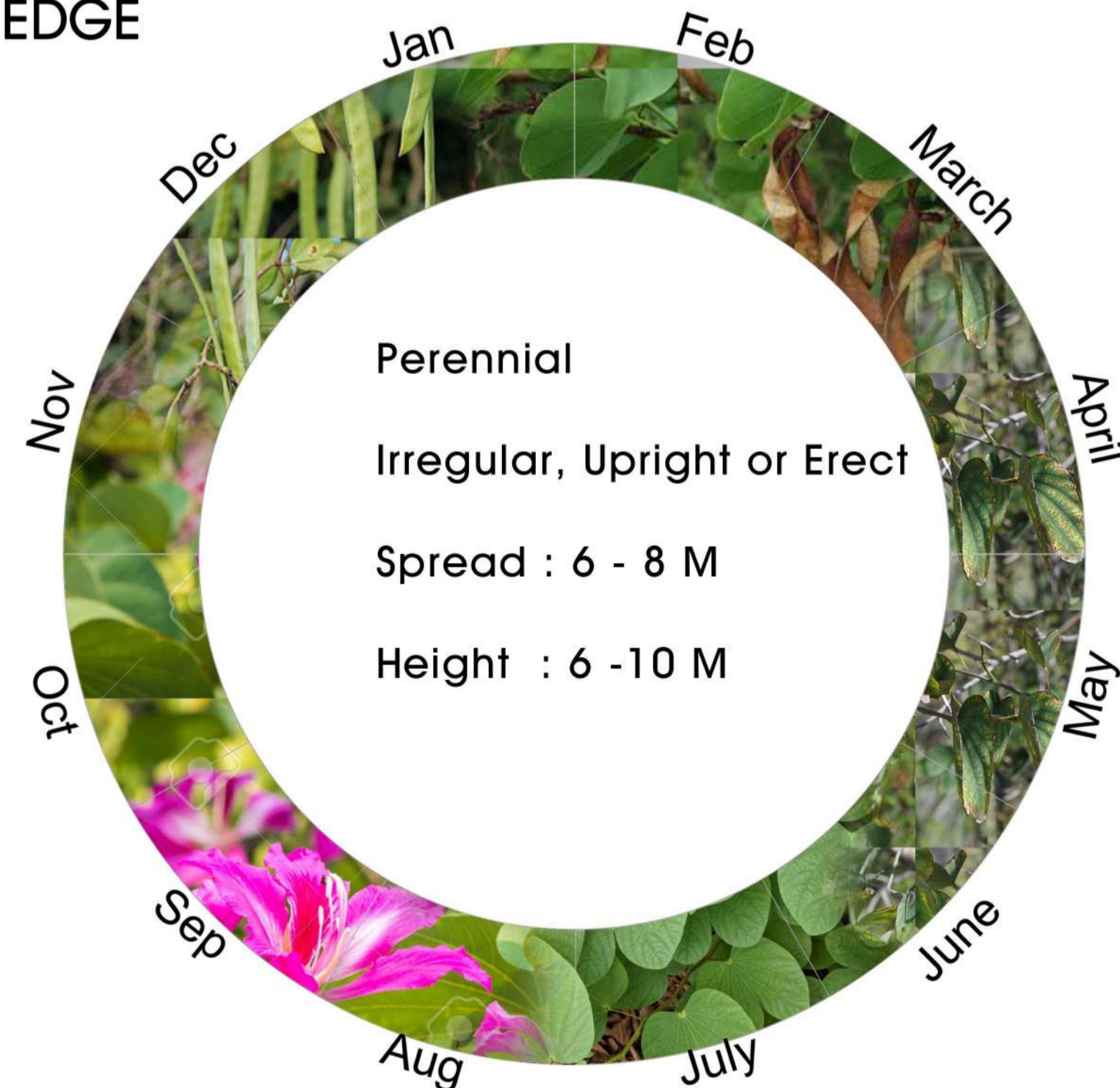
DECK SPACES OVERLOOKING THE WATERBODY AND RIPARIAN EDGE



RIPARIAN EDGE AND FLOATING ISLANDS IN THE WATERBODY



*Tabebuia argentea* Golden Bell



*Bauhinia purpurea* Purple bauhinia