

SPRING
2020

3

EVENTS
ACTIVISM
LEARNINGS
INITIATIVES
COLLABORATIONS
CONVERSATIONS
OUTREACH
WALKS
ACADEMICS



landscape matters

ISOLA DELHI-NCR CHAPTER | NEWSLETTER

Landscape reflections in the time of COVID-19. A small micro-organism has been able to do what decades of activism couldn't — halt the world in its tracks and give Nature a moment. As the fast spreading pandemic has disrupted normal life, we may need to figure out new ways to work and live. We must also reflect on how our actions impact our immediate environment and the world at large.

As a profession that works directly with the environment, we will need to step up to the challenge and work closely with Nature, taking inspiration from and paying homage to our dear Professor Ravindra Bhan whom we sadly lost in February. In many ways it is the same debate at the centre of our concerns for the redevelopment of the Central Vista. Landscape Architects must show a way to plan cities that can maximize habitat preservation so that wildlife and other animals are not stressed further and such outbreaks less likely.

Everyone, stay safe. Stay home.

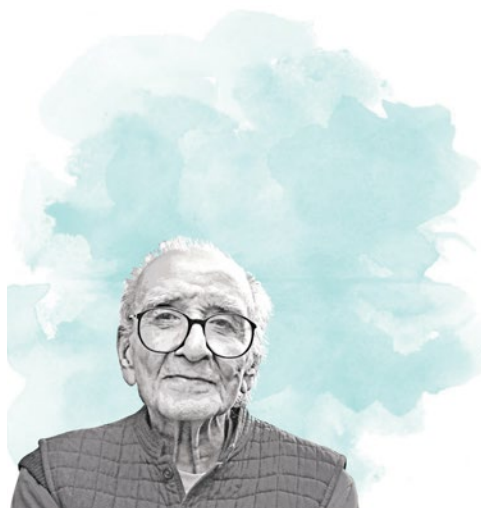


PHOTO CREDIT: grafniti

MEMORIAL MEETING PROFESSOR RAVINDRA BHAN

SCHOOL OF PLANNING & ARCHITECTURE,
NEW DELHI
FEBRUARY 24TH, 2020

Professor Ravindra Bhan, may well be called the father of modern Landscape Architecture in India. He passed away on the 15th of February at the age of 88 leaving a huge void in this noble profession which will be difficult to fill. He will always be considered as **one of the most influential environmental planners and landscape architects** by the design community in our country.

Ravindra Bhan often talked about how a landscape architect should deal with the design of the outdoor environment with the complete understanding of nature. It is by "**design with nature**" that Professor Bhan taught us, that the way we occupy and modify the earth, is best when it is planned and designed with careful regard to both the ecology and the character of the landscape. In this way, he argued that our cities, industries and farms could avoid major natural hazards and become truly regenerative. More deeply, Professor Bhan believed that by living with rather than against the more powerful forces and flows of the landscape, communities would gain a stronger sense of place and identity.





| LEFT TO RIGHT: SUJATA KOHLI [HONORARY PRESIDENT, ISOLA], JASLEEN WARAICH [HONORARY CHAIRPERSON, ISOLA DELHI CHAPTER] AND K. T. RAVINDRAN [FOUNDER & FORMER PRESIDENT, IUDI] PAY THEIR HOMAGE TO PROFESSOR RAVINDRA BHAN



PROFESSOR BHAN WAS
CONFERRED WITH THE
ISOLA MEDAL, 2010
[LIFETIME ACHIEVEMENT]
FOR HIS INVALUABLE
CONTRIBUTION TO
THE PROFESSION OF
LANDSCAPE ARCHITECTURE
IN INDIA

► It was Professor Ravindra Bhan who **established the first formal training in landscape architecture in India** with the support of Ford Foundation at the School of Planning and Architecture (SPA), Delhi, and later went on to head the newly created Department of Landscape Architecture at the SPA from 1972-76. Professor Bhan considered landscape architecture as **an interdisciplinary and transdisciplinary enterprise** that integrates the science and art of studying and influencing the relationship between spatial pattern and ecological processes. He believed that the **theory, methods, and applications of landscape ecology are directly relevant to sustainability**.

A Memorial Meeting was held in SPA, New Delhi on 24th February, where a large group of his students, friends, and colleagues gathered, to remember him and to pay tributes. Professor Bhan maintained high standards in his teaching and practice and expected the same rigour from his students. This quality was mentioned by everyone from the students to fellow colleagues. Heads of Departments of all the different disciplines paid their respects and acknowledged his contribution towards many disciplines in particular the professions of Landscape Architecture, as well as Urban Design where he set up a Site Planning studio which continues to guide the students till today. The tributes, even though at times in a lighter vein, left some of us wet-eyed. Clearly, he enjoyed the love and respect of many and he will be remembered forever.

INTERACTIVE DISCUSSION CONCERNS REGARDING THE CENTRAL VISTA REDEVELOPMENT PROJECT

PHD HOUSE, NEW DELHI
JANUARY 27TH, 2020

An interactive discussion was organized by IUDI and ISOLA Delhi-NCR Chapters at PHD House, New Delhi on 27th January 2020 to voice **concerns regarding the reimagining and renewing of a national icon – the Central Vista, New Delhi**.

The issues that came to the fore included insufficient time-lines, the proposed land use changes in the project, the lack of transparency in the process of awarding of the work, decrease in public space, need for sensitive ecological planning and landscape design and general concern over Delhi's heritage being destroyed. Design and planning professional bodies argued that **a project of this magnitude and importance required public consultations as well as studies to assess the project's impact on traffic, heritage and the environment in Delhi**.

A joint statement was subsequently shared by ISOLA and IUDI, in which some of the major concerns raised by ISOLA are briefly stated herein:

ENVIRONMENTAL/ HISTORICAL/ SOCIOLOGICAL/ AESTHETIC SIGNIFICANCE OF THE SITE

- Ecological significance/ Environmental issues (green area versus built, biodiversity, lungs of city, water recharge etc.) How many trees will be felled? How the green cover of 80 acres being redeveloped be replenished?
- Socio-cultural significance (how the area is a major public green space of the city).
- Aesthetic significance (how these elements contribute to the scale, proportion and experience of the site).





| THE INTERACTIVE DISCUSSION SESSION ON THE CONCERNS ABOUT THE CENTRAL VISTA PROJECT WAS WELL ATTENDED BY THE CHAPTER MEMBERS AND PROFESSIONALS

THE PROPOSED LAND USE CHANGES & DECREASE IN PUBLIC SPACE

- As many as 80 acres of land, which is currently accessible to the public, will become 'restricted' and can only be accessed by government officials. This change in land use is 'legally not tenable' and there is no provision to compensate for those spaces that will not be accessible to the public.
- Instead of taking away public space, this was a great opportunity to decentralize and add to the public-accessible spaces and functions.

NEED FOR SENSITIVE ECOLOGICAL PLANNING AND LANDSCAPE DESIGN

- Comprehensive landscape planning to integrate circulation, disaster preparedness, service integration, within an aesthetic, intuitive and appropriate plan is required early in the process.
- The potential to create a place of ecological value in response to climate change through climate modulation, thermal comfort, storm water management, biodiversity habitat and landforms, requires an integrated design solution. Piecemeal building design does not respond to this need.
- The protection of existing trees, creative ways to protect as many as possible and the transplantation of others need to be factored in, to be done right.

LACK OF ENVIRONMENTAL IMPACT ASSESSMENT

- Were biodiversity surveys of the project area conducted before the Master Plan was prepared?
- What is the status of the EIA process for the project? What will be the quantity of waste generated by existing buildings that are earmarked to be demolished?

This project is a precedent for all important public projects that are being planned and must be seen as such. Without a proper public consultative process and also without well-considered site related and other studies that should precede any project of such dimensions, we are setting the tone for the years to come.



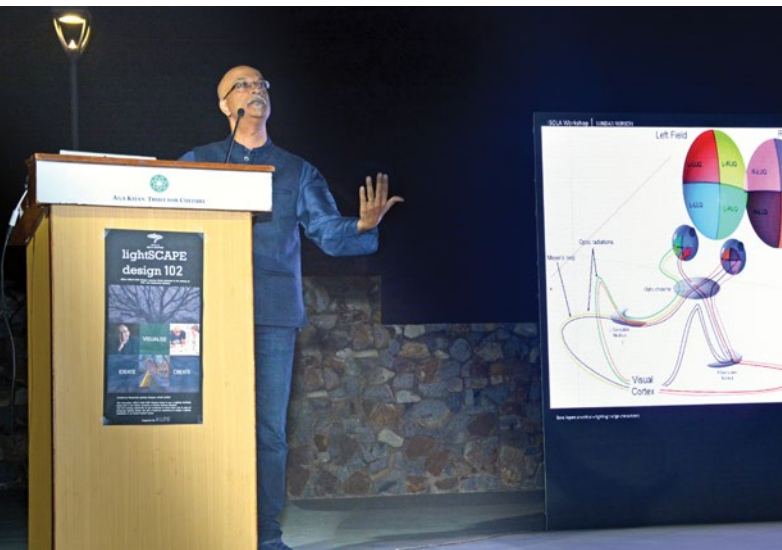
SATELLITE VIEW OF THE EXISTING CENTRAL VISTA, NEW DELHI
SOURCE: <https://www.google.com/maps>
ACCESSED ON 27 MARCH 2020

LEARNING SERIES
**LIGHTSCAPE
102**
DESIGN WORKSHOP
FOR LANDSCAPE
LIGHTING
NOVEMBER 22ND, 2019



| SOLA Delhi-NCR Chapter was honoured to dedicate its "Learning Series" in the memory of late Professor Mohammad Shaheer who continues to guide us through his enduring volume of work and through his contribution as a teacher for many hundreds of us landscape architects in this country.

The second event in this series, **Lightscape 102**, a Design Workshop for Landscape Lighting, was curated by **Linus Lopez**, a renowned Lighting Designer, skilled in conceptualization and visualization of lighting experiences with a focus on planned electrical systems and creative lighting design strategies. The event was organised on 22nd November, 2019 in the wonderful ambience of one of Delhi's best-known heritage gardens, the Sundar Nursery, that was part of the restoration works undertaken as part of the Nizamuddin Urban Renewal Initiative, by Shaheer Associates in close consultation with the CPWD-AKTC project team.



| LIGHTING DESIGNER LINUS LOPEZ PRESENTED VARIOUS CONCEPTS OF LANDSCAPE LIGHTING. A TEAM OF SPECIALISTS GUIDED THE HANDS-ON EXERCISES FOR THE PARTICIPANTS.



| THE ORGANISING TEAM OF ISOLA DELHI-NCR CHAPTER AT THE SUNDAR NURSERY

► Landscape lighting offers an incredible opportunity to enjoy a space at night. It not just **makes outdoor space usable at night**, it also adds a **magical experiential view** of the surroundings. Lightscape 102 was a workshop that aimed to provide landscape architects with an **introductory knowledge and tools** that they need to develop outdoor lighting installations and answer some of the many questions that one often encounters while designing an outdoor lighting system.

The workshop began with a presentation by Linus on various concepts of landscape lighting which was followed by **exciting hands-on group exercises** where we learnt how to design for light '**working with Eyes + Hands + Brain**' and understand how suitable lighting applications can enhance the beauty of landscape while conserving the elegance of the night sky. The group exercises were guided by a team of specialists who explained how different lighting tools create different visual effects in the same situation. A fun event of **learning by doing**, the workshop was a well-curated event in a marvelous landscape setting!

FROM THE CHAIRPERSON

ISOLA DELHI-NCR CHAPTER OUTGOING MANAGEMENT COMMITTEE

Jasleen Waraich, *Honorary Chairperson*
Chhitiz Gupta, *Honorary Secretary*
Vina Verghese, *Honorary Treasurer*
Anita Tikoo, *Member*
Madhup Mazumder, *Member*
Sunny Aggarwal, *Member*
Fabeha Fatima, *Member*
Amit Bhattacharya, *Member*

Dear friends and colleagues,

It has been an honour serving the ISOLA community with all of you. Working for ISOLA, these last four years, alongside my fantastic team mates: **Madhup, Vina, Chhitiz, Anita, Fabeha, Sunny** and my constant support **Sujata Hingorani** have been a real blast! I am happy to note that we achieved a number of goals in our term: **Increasing the interest and visibility of landscape design in the broader design communities, establishing liaisons with non-ISOLA communities, sharing new learnings and advocating for our profession and the city.**

Please join me in welcoming **Aditya Advani** as he takes over as the new Elected Chair for the 2020-22 term with **Shwetal Kadam, Ameet Babbar, Harpreet Kaur** and **Sunetra Surabhi** in his team. Best wishes to them from all of us in the outgoing team.

May this formidable Chapter continue to grow in strength! Looking forward to carry on with my service and support to all of you in the coming years.

Sincerely yours,

Jasleen Waraich, Chairperson, ISOLA Delhi-NCR Chapter | March 31, 2020



The annual General Body Meeting of all members of ISOLA Delhi-NCR Chapter followed by an evening event, "**New Directions & New Meanings in Landscape Architecture**" planned for this month end, is now being postponed due to COVID-19 and will be held at a later date, as and when circumstances are conducive.



SPRING
2020

3



TEXT & PHOTOGRAPHS:
ISOLA DELHI-NCR CHAPTER EXCEPT
WHERE CREDITED OTHERWISE

ISOLA Delhi-NCR Chapter

isoladelhichapter@gmail.com
<https://www.facebook.com/ISOLA-delhi-chapter-online>



Join ISOLA Delhi-NCR Chapter in its initiatives and activities. Members are requested to reach out to us with the verticals they wish to be engaged in by sending a request to our email: isoladelhichapter@gmail.com



Communication & Outreach
[Newsletter, Facebook, Instagram]



Education & Membership



Events & Technicals



Walks



Advocacy

Mosaico People Pvt. Ltd.

+91-9810821160, 9717252532
raj@mosaicopeople.com
<http://www.mosaicopeople.com>

