

ISOLA²⁰¹⁸

HONOURS & AWARDS

CALL FOR ENTRIES



*Project photograph from works of Satish Khanna winner of ISOLA Medal, 2017
Photo Credit: Debopriya Banerjee, Kolkata*



ISOLA

INDIAN SOCIETY OF LANDSCAPE ARCHITECTS

Registered under Indian Society's Act 1860 Sec 21, GUJ-9557, and
Bombay Public Trust Act 1950 Sec 29 No.A-9417

www.isola.org.in



INDIAN SOCIETY OF LANDSCAPE ARCHITECTS

invites entries for the eighth cycle of

ISOLA Honours & Awards 2018

The Indian Society of Landscape Architects (ISOLA) is a professional organization with over 500 members. The objectives of the society are to promote and enhance professional excellence in the field of Landscape Architecture among its members, and to promote and conserve natural resources, the environment and the natural landscape.

The following Honours and Awards shall be given at the Awards Presentation Ceremony during the National Conference of the Indian Society of Landscape Architects at Kochi, Kerala in February 2019.

HONOURS

THE ISOLA MEDAL

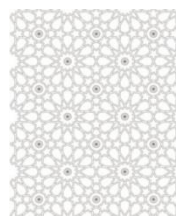


PROFESSIONAL AWARDS

THE LANDMARK
AWARD



THE GENERAL DESIGN
AWARD



THE UNBUILT DESIGN
AWARD



STUDENT AWARDS

THE PRABHAKAR BHAGWAT STUDENT AWARD



AWARDS JURY

ADIT PAL | GANESA IYER VISWANATHAN | SAVITA RAJE
MOHAN RAO | JITENDRA PAWGI

AWARDS CONVENOR

SAVITA PUNDE

The jury process is 'anonymous'. The identity of the entrants and the creative team will not be revealed to the Jury.



ISOLA

HONOURS

THE ISOLA MEDAL

The ISOLA Medal is the highest honour that the Indian Society of Landscape Architects (ISOLA) bestows upon a landscape architect whose lifetime achievements and contributions to the profession have had a unique and lasting impact on the welfare of the public and the environment. The winner for this category is identified through a process of nomination & jury selection.

NOMINATION PROCESS

Nominations are submitted by ISOLA members in good standing.

Step 1 Login to www.isola.smebusinesssoftware.com/login.html using your username (email registered with ISOLA) and password.

Step 2 From the 'Awards Tab', select 'The ISOLA Medal'. From the drop-down menu select nominee.

Step 3 Upload a Letter of Nomination describing the reasons the nominee deserves to be awarded this honour. (Letter not to exceed 3 typed pages).

Document uploaded should be saved as GM_Full Name of Nominee in pdf format.

Save the nomination and submit.

Step 4 A link to accept the nomination will be sent to the proposed recipient on his/her email. The nomination has to be accepted by the Nominee (proposed recipient of the award) either by clicking on the link or by login to the website.

Step 5 Nominee must follow Step 1 and 2. Save and submit.

This completes the nomination process.

SUBMISSION DETAILS

- The following have to be uploaded by the due date mentioned.
- A photograph of the nominee (by the nominee through the 'My Profile' tab).
- A complete dossier of works to the 'Entry Upload' tab, including descriptions, drawings and photographs of important projects, articles, etc.
- In the case of academic achievements, include research papers and projects, articles published, seminars or conferences conducted, honours bestowed, etc.
- Entry should be in pdf format up to 20mb, with a minimum resolution of 300dpi.



PROFESSIONAL AWARDS

THE LANDMARK AWARD

The Award recognizes a distinguished landscape architecture project in India completed at least 10 years ago that retains its original design integrity and contributes significantly to the public realm and the community in which it is located.

ELIGIBILITY

Local organizations, public officials, civic & historic preservation organizations and interested individuals may submit a project for this award. The entrant for this award may or may not be an ISOLA member, however, the project should have been designed in India. The jury members may choose to visit the project site as a part of the project assessment for the award.

Members of Jury, their firms, organisations, agencies, their employees or employers they represent, are not eligible to participate in the awards. ISOLA retains the right to disqualify any entry that presents a conflict of interest.

PROJECT ENTRIES

Outstanding examples of public spaces including those within institutions, industry or townships whose landscape is demonstrably seen to have played a dominant role in establishing the character and identity of the place can be submitted. It is mandatory to submit complete details of all stakeholders associated with the project .i.e. Landscape architect, Owners, Persons currently Managing / Operating the Project, etc.

CRITERIA

The jury shall consider the project's sustained value to the community it serves and the continued relevance of the project's design expression. The Award Jury shall select only one project for the award and the award shall be jointly given to the organization, individuals and the designer/design office.

REGISTRATION FEES

Rs 2000.00 (Rupees Two Thousand Only)

THE GENERAL DESIGN AWARD

The award recognizes site-specific works of landscape architecture and design. Entries in this category must be built projects.

ELIGIBILITY

Only Fellow, Associate or Graduate members of ISOLA in good standing are eligible to participate. Members of Jury, their firms, organisations, agencies, their employees or employers they represent, are not eligible to participate in the awards. ISOLA retains the right to disqualify any entry that presents a conflict of interest.

PROJECT ENTRIES

Public, institutional or private landscapes including residential landscapes, historical landscape projects, landscape design for infrastructure projects etc can be submitted. The project should be designed and detailed by an ISOLA member/ firm based in India whose principal is an ISOLA member.

CRITERIA

The jury shall consider the quality of design and execution of work, design context, environmental sensitivity and design value to the client and its setting.

The jury shall select a maximum of two (2) entries for Award of Excellence.

Additionally after due consideration of merit and quality, the jury at its discretion may announce a maximum of three (3) special mentions.

REGISTRATION FEES

Rs 2000.00 (Rupees Two Thousand Only)



PROFESSIONAL AWARDS

THE UNBUILT DESIGN AWARD

The Award recognizes unbuilt works of landscape architecture. All entries must submit a certificate confirming that the work is their own.

ELIGIBILITY

All Fellows, Associates and Graduate members of ISOLA in good standing are eligible to participate.

Members of Jury, their firms, organisations, agencies, their employees or employers they represent, are not eligible to participate in the awards. ISOLA retains the right to disqualify any entry that presents a conflict of interest.

PROJECT ENTRIES

Public, institutional or private landscapes including residential landscapes, historical landscape projects, public spaces, landscape design for infrastructure projects etc can be submitted.

The project should be conceptualised and designed by an ISOLA member / firm based in India whose principal is an ISOLA member.

CRITERIA

The jury shall consider the innovativeness and clarity of design approach, design concept, context and environmental sensitivity.

The jury shall select a maximum of two (2) entries for Award of Excellence. Additionally after due consideration of merit and quality, the jury at its discretion may announce a maximum of three (3) special mentions.

REGISTRATION FEES

Rs 2000.00 (Rupees Two Thousand Only)

STUDENT AWARDS

THE PRABHAKAR BHAGWAT STUDENT AWARD

The Award shall honour the best Landscape Architecture Thesis or Final Project for the Academic year 2017 -2018.

ELIGIBILITY

To participate in the Student Awards, the entrant should have been a student of full time two (2) years Masters Course in Landscape Architecture of an institute recognized by ISOLA and a student member for the years 2016-2019 in good standing at the time of registration.

Student members applying for membership for the first time will have to pay membership fees for the current year + past two year, i.e., duration of that course of their study.

Students guided by a member of Jury are not eligible for participating in the awards. ISOLA retains the right to disqualify any entry that presents a conflict of interest.

CRITERIA

The Jury shall select a maximum of two (2) entries for the Student Awards. Additionally after due consideration of merit and quality, the jury, at its discretion may announce a maximum of three (3) special mentions.

REGISTRATION FEES

Rs 500.00 (Rupees Five Hundred Only)



ONLINE REGISTRATION PROCESS

Nominations are submitted by ISOLA members in good standing.

Step 1 Login at <https://isola.smebusinesssoftware.com/login.html> using your username (email registered with ISOLA) and password.

Step 2 Go to the 'Awards Tab' and select award for registration.

Step 3 Upload the required documentation as follows.

FOR PROFESSIONAL AWARDS

A Letter of Authorship or Self Declaration of Copyright, certifying that the entrant is the sole / joint author of the landscape design submitted. Names of all Co-Applicants (if any) should be mentioned in this letter.

Document uploaded should be saved as XX_Full Name of Nominee in pdf format, where XX is:

- o LA The Landmark Award
- o GD General Design Award for Excellence
- o UD Unbuilt Design Award

FOR STUDENT AWARDS

A Letter of Authorship or Self Declaration of Copyright, certifying that the entrants are the absolute sole author of the landscape design submitted and the same is the original work produced by them for the Thesis.

A Letter of confirmation from the Institute / College authenticating the work done by the student of full time 2 years Masters Course in Landscape Architecture.

Documents uploaded should be saved as ST_Full Name of Nominee in pdf format.

Save the nomination and submit, when all details are complete.

Step 4 On validation of the registration by the ISOLA Awards Committee, the applicant will receive confirmation and link for payment. This link can also be accessed by logging on to the website.

Step 5 On payment, the registration will be complete and the applicant will receive an email confirmation with an official code number.



SUBMISSION DETAILS

The following have to be uploaded by the due date mentioned.
Entry should be in pdf format up to 20mb, with a minimum resolution of 300dpi with the official code number as the filename.
The official code shall also be part of header / footer of every slide.

FOR PROFESSIONAL AWARDS

DESIGN CONCEPT :

Concept drawing/drawings along with a clear concept note/ intent, parameters, constraints etc is a prerequisite of the submission. This should clearly indicate the thought processes that formed the basis of the design.

BRIEF DESCRIPTION WITH SUMMARY :

This shall include descriptive data summary briefly describing the project, location, scope, size, site & its context, design program, design intent, materials & construction methods, environmental impact & concerns, collaboration with the client & other significant issues. The summary must include a small note on why the project should be considered for the award.

SITE PLAN :

A comprehensive site plan explaining the context of the entire project.
Any other drawings or documentation to explain the project.

FOR STUDENT AWARDS

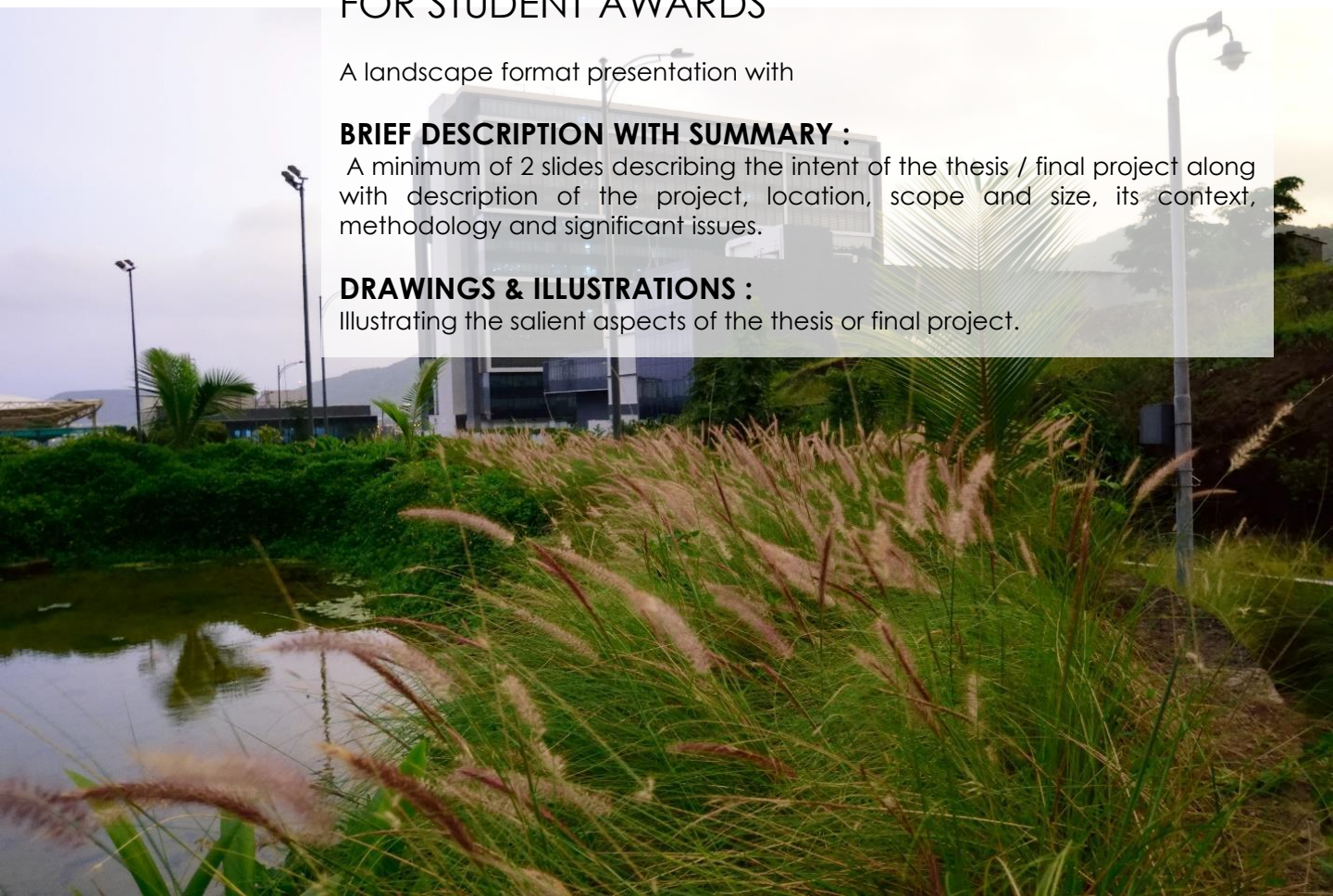
A landscape format presentation with

BRIEF DESCRIPTION WITH SUMMARY :

A minimum of 2 slides describing the intent of the thesis / final project along with description of the project, location, scope and size, its context, methodology and significant issues.

DRAWINGS & ILLUSTRATIONS :

Illustrating the salient aspects of the thesis or final project.





IMPORTANT INSTRUCTIONS

Please note that if an entrant wishes to apply for more than one project, a separate registration process needs to be followed and separate registration fees have to be paid for each project.

Upon receipt of the duly filled registration form, fee and identity proof, the ISOLA Awards Committee will scrutinize the forms. It retains the right to disqualify any entrant who does not meet the program requirements or presents a conflict of interest.

It will issue an official Code Number to each eligible entrant. The same code number will be put on all the entry sheets and other documents at the time of submission by the entrants.

The submission must not reveal the names or identity of the entrant and/or landscape architects, firms, other designers, students, schools, photographers. Any such **identification would result in automatic disqualification.**

Entrants must use an **easily readable typeface such as Times New Roman, Calibri or Arial**, no smaller than **11-point size**, for all text.

Presentation to be send in pdf format (only) in Landscape Format slides (min. 4 and max. 10 slides). File size limit is 20mb, with a minimum resolution of 300dpi. File name will be the official code number. **The official code shall also be part of header / footer of every slide.**

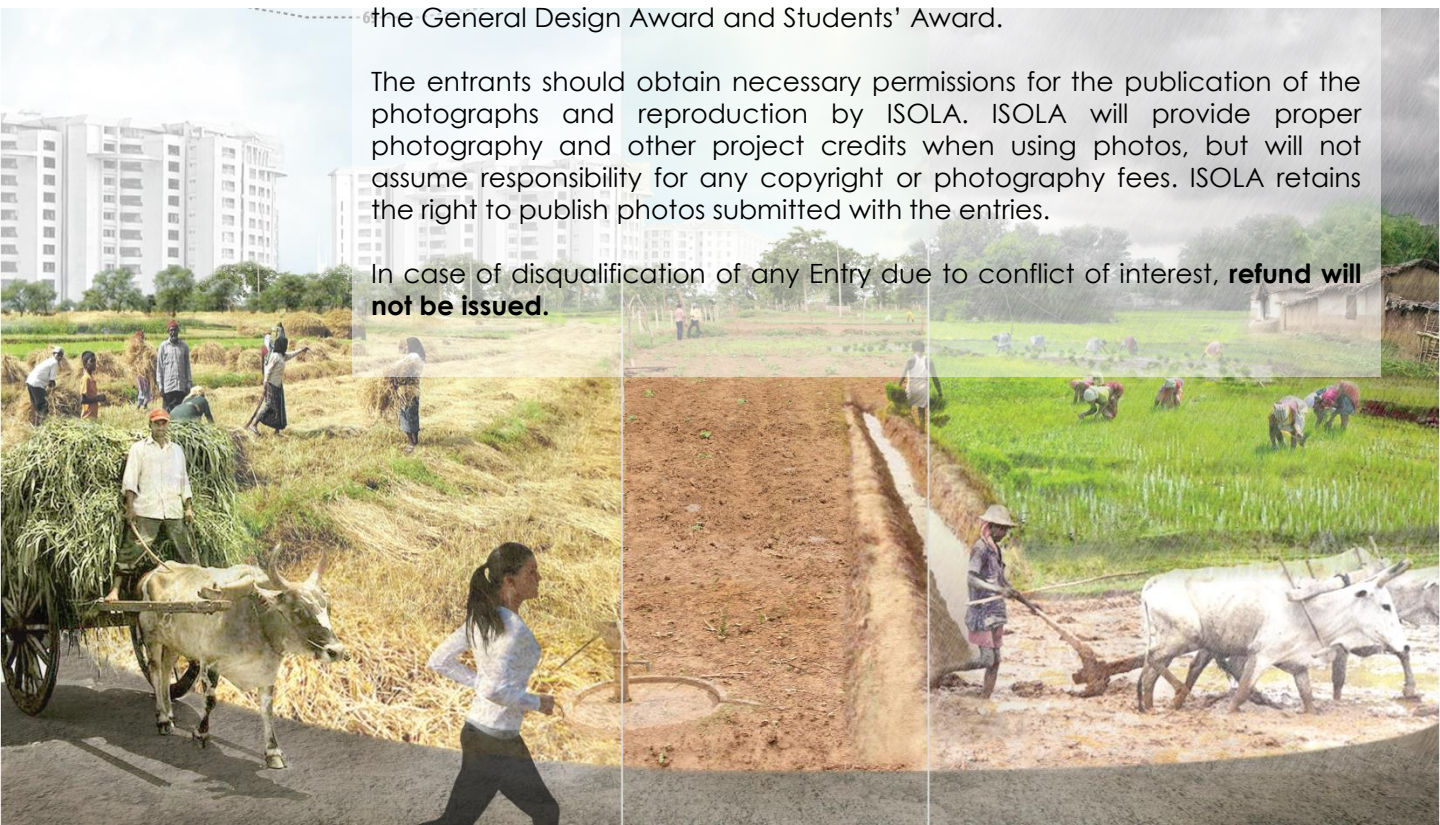
All winners shall be required to send in hard copies of their entries reconfigured to a maximum of **5 A1 (Landscape format) laminated and mounted sheets** for exhibition at the Awards Ceremony to be held in **February 2019 at ISOLA conference at Kochi.**

The entrants must be ISOLA members in good standing at the time of registration for the awards.

This includes nominee and nominator for the ISOLA Medal, participants for the General Design Award and Students' Award.

The entrants should obtain necessary permissions for the publication of the photographs and reproduction by ISOLA. ISOLA will provide proper photography and other project credits when using photos, but will not assume responsibility for any copyright or photography fees. ISOLA retains the right to publish photos submitted with the entries.

In case of disqualification of any Entry due to conflict of interest, **refund will not be issued.**





IMPORTANT DATES

10 th October	2018	Announcement / Call for entries: Start date for Payments and uploading award submission
27 th November	2018	Last date for receiving Registrations , Payments
30 th November	2018	Last date for receiving entries for all Awards
2 nd week December	2018	AWARDS JURY
1 st week January	2019	DECLARATION OF RESULTS

Online registration, payment and online uploads to be done on or before 23.59 hours of the date mentioned.

Juries visit to any of the projects registered for the ISOLA LANDMARK AWARD, if deemed necessary, may be planned between 02nd week of December 2018 (AWARDS JURY E-MEET) and 01st week of January 2019 (Declaration of results).

ADDRESS

Indian Society of Landscape Architects, 312, Chitrarath Complex, Off CG Road, Navrangpura (Adj Hotel President), Ahmedabad 380009, India.

Phone : +91-79-40323110 | Email: ISOLA.awards@gmail.com | ISOLAoffice@gmail.com

