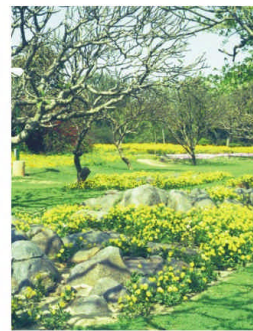
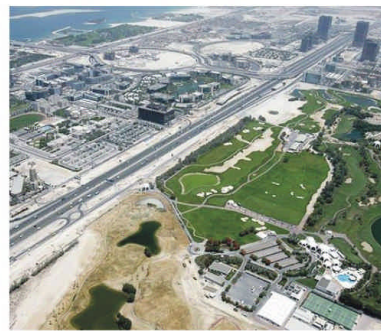


Instant CITIES



**Landscape
Infrastructure
Urban Form**

ISOLA CONFERENCE NEW DELHI February 20 - 21, 2009
INDIAN SOCIETY OF LANDSCAPE ARCHITECTS



I S O L A

INSTANT CITIES :

Landscape, Infrastructure and Urban Form

To many, the shining new glass towers rapidly animating the skyline in the fringe townships and suburbs of metropolitan and even medium size cities of India symbolise an economist's dream, a preview of corporate urbanism that seems to be the preferred image of tomorrow's city.

To others, perhaps citizens not too closely engaged with the urban boom, or those of another generation, these instant growths are such swift and unprecedented departures from past experience as to be virtually incomprehensible, if not actually disorienting and inimical to the ordinary conduct of everyday life. They elicit a negative response, and that is another point of view.

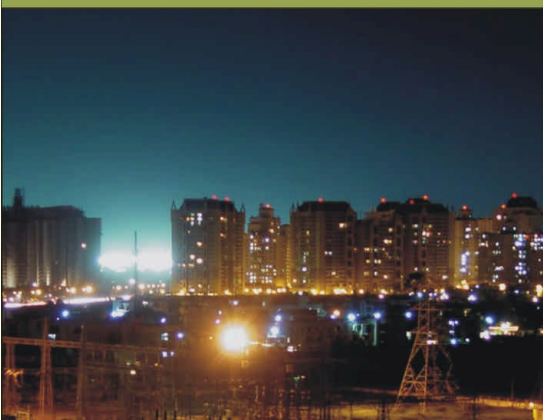
Current thinking about cities, urbanization and buildings is, quite rightly, dominated by concepts of 'green' - energy conservation and environmental sensitivity- and a new importance to infrastructure, but these are not echoed by a coherent urban picture on the ground.

Conventional planning administration, if it exists, doesn't stand a chance. It is quickly outpaced by the speed of development in what is emerging as a default urban model - the 'instant city' displaying the visually enticing surface imagery of today's international style urban form, and also projecting ambitions of being 'world-class' , but hardly sustainable even now , let alone in the future.

Often in the recent past, these urban extensions, large though they are, have grown piecemeal as a series of development episodes, with one thing not quite fitting with the next, and the all-intrusive tracery of transport infrastructure overlaid as an unrelated engineering event, unexploited as an element of urban form.

The role of landscape planning for public open space is recognized as vital to comprehensive structuring of these new forms of the city. It is the one element that can creatively bring together social, environmental and infrastructural components with some degree of aesthetic and functional consistency and at the same time also make a significant contribution to issues of energy, environment and urban form

Presentations and discussion at the Conference would be directed towards examining in very specific detail the planning opportunities offered by the vigour of the present development scene. Lessons can be learnt from successful experience elsewhere; it is possible also to attempt to set down some parameters for an approach to planning, landscape architecture and urban design that is closely responsive to the challenge represented by this new development phenomenon.



I S O L A

The Indian Society of Landscape Architects (ISOLA) is just over five years old, with members, spread all over the country. The organization is a member of the International Federation of Landscape Architects (IFLA)- a body representing the concerns of the profession worldwide.

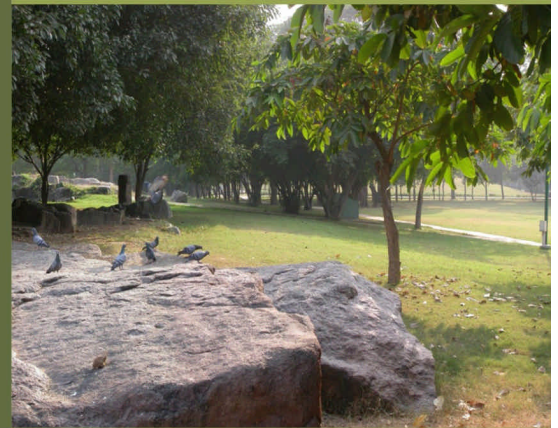
Following the success of the regional conference of IFLA held in Mumbai in February 2005, ISOLA organized conferences in Bangalore, Pune and Chennai in the last three years and now it is an annual event. For the year 2009, the national conference would be held on the 20th & 21st February 2009, at New Delhi.

C O N F E R E N C E A T D E L H I , 2 0 0 9

The Annual Conference of Indian Society of Landscape Architects (ISOLA) is scheduled for Friday 20th and Saturday 21st February 2009 at the India Habitat Center, New Delhi. The conference intends to invite speakers from within and outside the country to make presentations on several aspects of the main theme.

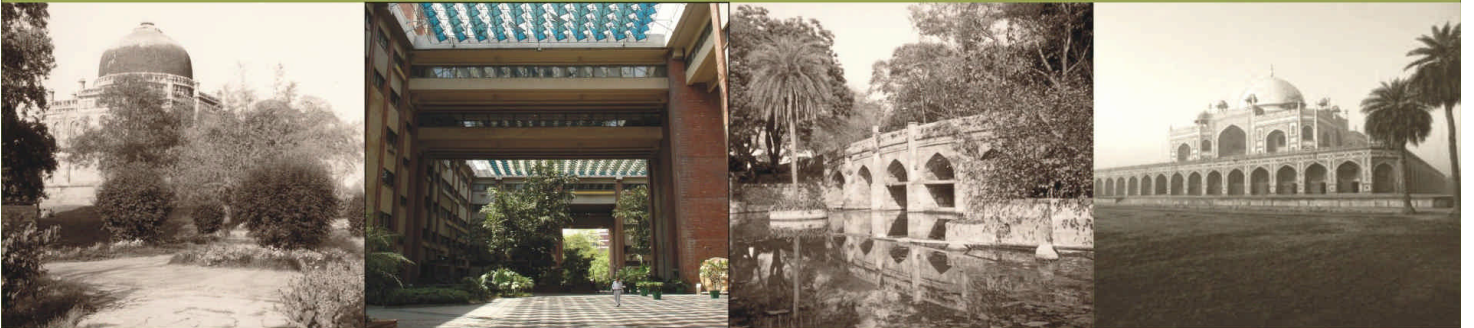
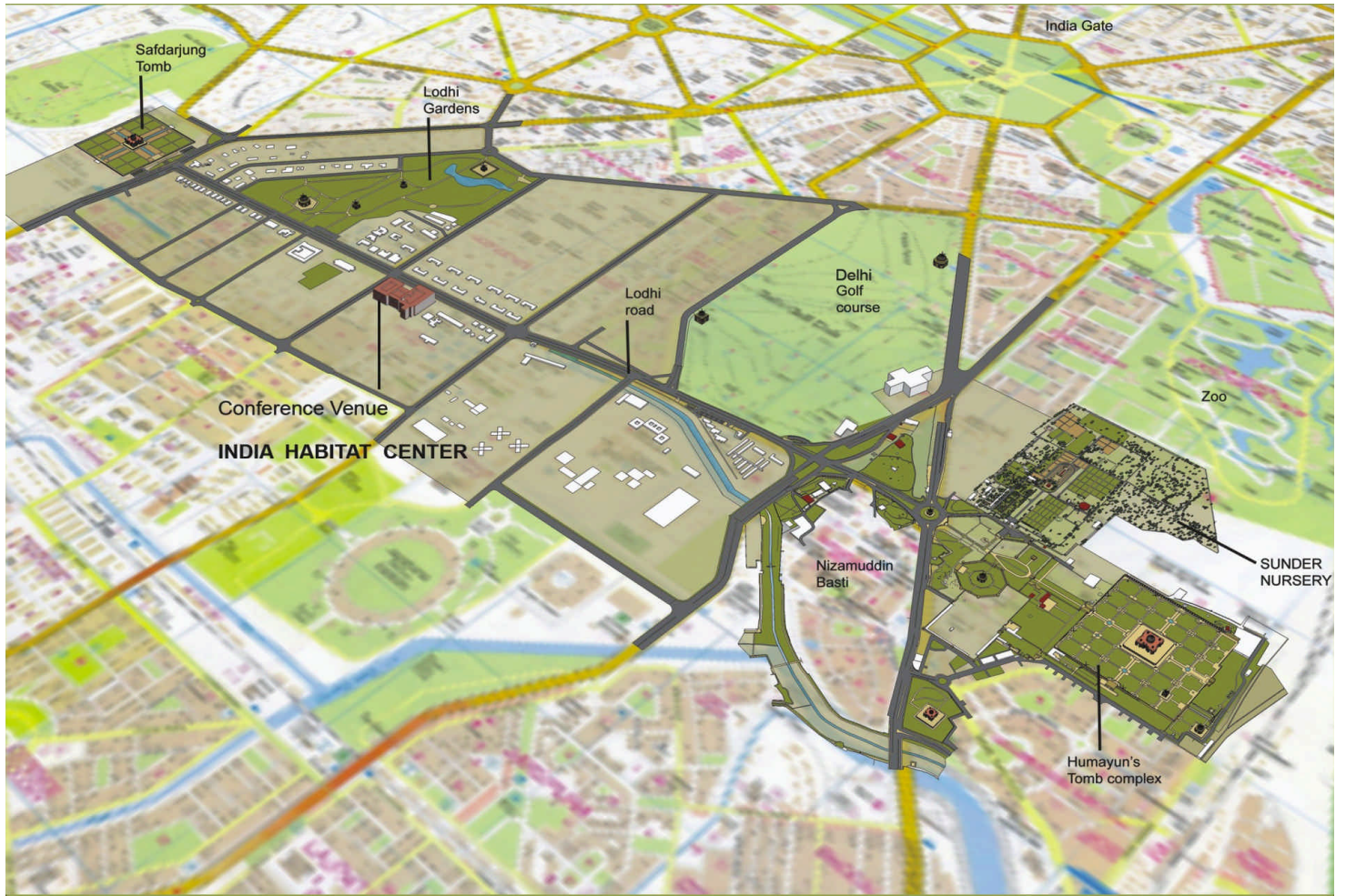
There would be four technical sessions over the two days, comprising Key note Presentation and two or three specialist speakers per session, plus panel discussions. The programme is as follows:

20th Feb-09	Inauguration and key note address
20th Feb-09	Session 1 : GENESIS The crisis on the ground An overview of trends and directions in urban expansion Current development models.
20th Feb-09	Session 2 : NETWORKS Returning cities to citizens A landscape for Urban Infrastructure
21st Feb-09	Session 3 : TOMORROW The challenge of city planning and energy, environment and resource conservation for tomorrow's urban landscape
21st Feb-09	Session 4 : IMAGES Alternate perceptions Life, Community and Identity Enclaves or inclusiveness? City as landscape, city as machine.



S P E A K E R S

- 1 ADIT PAL USA
- 2 ANURAG CHOWFLA New Delhi
- 3 CATHERIN BULL Australia
- 4 DENNIS PIEPRZ President, Sasaki Associates
- 5 DIANA BALMORI New York
- 6 DINESH MOHAN IIT, New Delhi
- 7 HARSH NEOTIA Kolkata
- 8 K T RAVINDRAN New Delhi
- 9 LEONARD LYNCH Clouston Associates, Sydney
- 10 MARY MISS New York
- 11 MICHAEL E ARTH USA
- 12 MOHAMMED SHAHEER New Delhi
- 13 PHILIP RODE LSE, United Kingdom
- 14 PRASANT HEDAO Auroville
- 15 VIRENDER WAKLOO New Delhi



Secretariat:

ISOLA Conference New Delhi 2009
 80/34B, 2nd Floor, Malviya Nagar, New Delhi-110017 (N.C.T. of Delhi) INDIA.
 Fax: 011-26671847, 41447483. Email: 2009isola@gmail.com

Regd. Office:

Indian Society of Landscape Architects
 C/o M/s Prabhakar B. Bhagwat, 901, Panchthirth, Opp. Arisoville, S.M.Road, Ahmedabad-380015.(Guj.) INDIA.
 Tel. :079-65420395. Email: society-landscape@yahoo.co.in, www.indianlandscape.ne