

LA NEWS



EXPANDING THE BLUE REVOLUTION

The upcoming Annual Conference at Bangalore is positioned to deliberate on water and its multi-dimensional roles in planning, development and design. The central idea is to critically examine the multiple facets of water as the determinant for interventions at all scales. Landscape architects engage with water at multiple levels; from understanding regional level natural systems to backyard gardens, the profession addresses water from its most intangible forms to its most experiential. Given the highly integrated and cross-disciplinary nature of the landscape profession, the intention is to bring together diverse perspectives, experiences and skills that connect water and the landscape profession and to identify the congruence of issues, challenges and solutions at varying scales and across geographies. In an effort to address the issue in a comprehensive manner, the theme of the conference has been classified into the following three broad categories:

Water as NATURAL RESOURCE
Resilience, climate change, vulnerability, adaptation, urban floods, wetlands, river basin.

Water as a SOCIO-CULTURAL ATTRIBUTE
Traditional water systems, traditional knowledge, microclimate, waterfront development, recreation, cultural expression, productive landscape, technology innovation, green infrastructure.

Water and DESIGN
Efficiency, irrigation, rain garden, xeriscape, rainwater harvesting, recycling, water treatment, water conservation, rating, benchmark, vegetation, sustainable landscape, aesthetics.

A series of pre-conference habba (events) were also conducted in a hands-on workshop/exhibition format, and, open calls for publication conducted across the city/region with multiple stakeholders such as NGOs, Public bodies, Institutions, etc. put out, to both spread awareness of the profession of landscape and the organization itself. Each habba was based on the topic of the conference -

Water and Society and addressed the three themes to better inform the main conference event.

6th Newsletter
January 2016



TRIBUTE



ISOLA AWARDS & HONOURS



10th ANNUAL GENERAL BODY MEETING



PANI KI KAHANI...
EVENTS AND TALKS



RE-CENTERING DELHI
EVENTS AND TALKS

Dear Members,

Seasons Greetings!!

2015 has been an unfortunate year for ISOLA. We have lost two of the pillars of our society in quick succession. Prof. Bhagwat left us to his heavenly abode on August 14 and soon after on November 28, we lost Prof. Shaheer. May they rest in peace. Struggling to cope with our losses we are left with a lot to achieve and to try and live upto their ideals.

On behalf of the Executive Council, I wish to thank Vikas Bhosekar and his team for having successfully hosted the 2015 ISOLA Annual National conference held at Pune in February.

The ISOLA Annual General Body Meeting (AGM) held on 22nd August, 2015 at CEPT Ahmedabad was followed by a small event, 'Landscape Explorations in Public Realm', wherein 10 landscape architects and students from across the country presented their works on the theme. This initiative by an enthusiastic EC team gave younger members the opportunity to present their works.

The Fifth cycle of ISOLA Honours and Awards were successfully conducted. I am happy to inform that we had better participation this year. The awards will be presented at the 2016 ISOLA Conference in Bangalore.

Isola continues to support the NASA ISOLA design trophy in its endeavour to increase awareness of the profession at the undergraduate level.

I believe that we need to engage with institutions on a continuous basis to raise the quality of education and in turn graduating landscape architects. I do hope our education board will achieve considerable success towards this.

Today as before, a vital need to promote the profession of landscape architecture; and increase its visibility at various levels- Central and State governments, the public sector, and amongst co-professionals and the general public, has been given some impetus. Delhi Chapter has taken a step in this direction by submitting a critical review of the proposed Lutyen's Bungalow Zone (LBZ) guidelines proposed by Delhi Urban Arts Commission (DUAC), along with INTACH Delhi Chapter. All chapters have worked diligently to organise events throughout the year and direct critical thinking and promote ISOLA objectives.

I am happy to announce that currently we are a body of over 600 landscape architects. The membership has seen a tremendous rise in the last year and I welcome all new members and urge them to actively take part in the activities of ISOLA.

We are in the process of providing a facility of online application of membership, and currently all the data is in the process of getting uploaded on the website for members to verify. ISOLA also has a Facebook page now in an endeavour to reach out through social media.

Looking forward to seeing you all soon at the Conference in Bangalore.



'We are in the process of providing a facility of online application of membership, and currently all the data is uploaded on the website for members'

**Best Wishes,
Rohit Marol President - ISOLA**



"A teacher affects eternity; he can never tell where his influence stops"

Prof. Prabhakar Bhagwat
20th June 1930 - 14th August 2015

Prof. Bhagwat was a great teacher and I consider myself to be blessed more as his disciple than a colleague. I had a long and strong association with him for almost 22 years. He was a father figure, my mentor and guide. He was an encyclopedia in himself with great charm, learnings, humour, ideologies and philosophies. It is really difficult to put down this great visionary in form of words, which may never justify his persona.

My first meeting with Sir goes back to 1990 when I met him at SPA Delhi, as a student. Later in 1991 after I settled in Ahmedabad, the first person whom I approached for professional support was Prof. Bhagwat, when he told me about initiating the Landscape Program at CEPT. In 1993, when it was finally happening, he did not forget this neophyte and called me on board. And thus commenced my long and fruitful association with him. I have been really fortunate to have him as my Guru.

He was the founder of ISOLA and the main force behind bringing all the Landscape Architects in India together. He was a hardcore professional, the first Qualified Landscape Architect of India and a great academician who had through his vast knowledge taught at various institutes of repute like SPA Delhi, NID Ahmedabad, IIT

Kharagpur, and JJ School of Architecture Mumbai, to name a few.

Although Prof. Bhagwat was a visionary and great leader, for us at CEPT, he has always been a teacher. He had the knack of remembering all his students and their thesis work. He could read students like a book. He was a friend, philosopher and guide to them and would advise them in all their problems ranging from work to family and friends to love affairs to marriage etc. The bonding he developed with his students continued even after their graduation. I know the students would definitely miss their BAPU, as they fondly called him.

Even today, though he is not amongst us physically, he will always stay in our heart through his work and knowledge that he has bestowed upon us. He shall always be a source of inspiration that shall enlighten us and shower upon blessings when in need.

-Deepa Maheshwari

Prof. Shaheer was an institution in himself, a guru to most India educated landscape architects. An institution because he was unique in his excellence of design expression as well as intellectual thinking, a combination not in the least usual in our context. This expertise and depth across subjects has left its footprints on intellectual and design terrain as a legacy of exemplary landscape projects, insightful articles and generations of inspired and conscientious students turned practitioners.

The decades of his engagement with the Post graduate department of Landscape architecture, SPA Delhi, as Professor and then Head were indeed golden years.



Prof. Mohammad Shaheer
27th April 1948- 28th November 2015

"A Life that touches others goes on forever"

Under his guidance, the department was a probing, creative and an exciting place of learning. There are many who will vouch for that and consider themselves fortunate to have been under his watchful eye. He inculcated in his students the rigor of practice, the need to consistently deliver quality in everything one did. He inculcated the true spirit of a Guru in wanting to disseminate his knowledge freely and repeatedly with all who went to him for advice. For generations we have considered it a badge of honour to have studied under him. We salute the Teacher that he was to all of us.

Beyond education, his contribution to the Landscape profession in India has been enormous. A landscape architect of rare distinction, his works have inspired and influenced the entire landscape community. His projects serve not just as benchmarks, they are indeed role models for practices throughout the country. He played a significant role in bringing recognition and dignity to the profession, be it as a member of the Delhi Urban Art Commission, or for penning down the code for landscape for the National building code, or as the author of landmark public projects across India.

As a fraternity, ISOLA, remain forever indebted to Prof. Shaheer. He was not only our founder member, but had been an invaluable guide and mentor to the Society, shaping in many ways how we have grown. The benchmark of ethical values that he set, have today, to a great extent, brought ISOLA to the respect and recognition it elicits in the profession today. As President of ISOLA, I pledge to follow the path he so clearly defined for us. We stand united forever guided by his intellect and spirit.

It has been an enriching journey with a legend. Though we will miss his presence, his essence and spirit will continue to guide and mentor us. We individually, professionally and as a fraternity aspire to deliver to the high standards he had set out for himself.

Thank you, Prof. Shaheer for letting us have the honour of walking along side you for a brief moment in time as you charted your journey across the Indian terrain.

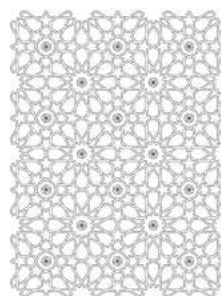
- Rohit Marol

HONOURS



THE ISOLA MEDAL

PROFESSIONAL AWARD

THE LANDMARK
AWARDGENERAL DESIGN
AWARD OF EXCELLENCE

ISOLA STUDENTS AWARD



The Practice of Landscape Architecture in modern India has seen its share of pioneers, torch bearers and emerging talent. Their body of work- individually and collectively - represents the growing concerns and emerging vocabularies of landscapes in theory, art, design and pedagogy. ISOLA has instituted an Award for Excellence and Lifetime Contribution in order to celebrate and mark their contributions for posterity. ISOLA is honoured to have such stalwarts and pioneers in their midst

Indian Society of Landscape Architects had invited entries for the fifth cycle of ISOLA Honours & Awards 2015 and received a total of 27 valid entries in all categories.

The jury for THE LANDMARK AWARD consisted of Rohit Marol, Nina Chandavarkar and Aditya Advani, and the jury for THE ISOLA MEDAL, GENERAL DESIGN AWARD, ISOLA STUDENTS' AWARD were Rohit Marol, Nina Chandavarkar, Aditya Advani and Geeta Wahi Dua.

The jury was held on 19th December 2015 and the Honours and Awards shall be given at the awards presentation ceremony during the 11th Annual Conference of Indian Society of Landscape Architects in Bangalore to be held in January 2016. The results as awarded by the jury are:

ISOLA GOLD MEDAL

Late PROFESSOR PRABHAKAR BHAGWAT

ISOLA LANDMARK AWARD

RAJALAKSHMI IYER

For Waterfront Development Of
Futala/Telankhedi Lake At Nagpur

ISOLA GENERAL DESIGN AWARD

JEYAKUMAR SRINIVASAN

For Temple Of Consciousness, Aliyar
Tamilnadu

ISOLA STUDENTS AWARD

SUNNY AGARWAL (S.P.A, Delhi)

For Landscape proposal for District Park,
Jheelwala park, Hari Nagar, New Delhi

MAITHILY VELANGI (S.P.A, Delhi)

For Urban Park, interfacing Environment,
Heritage and the Culture

RAHUL SUKUMARAN (CEPT, Ahmadabad)
For understanding the Cultural Landscapes of
an Agricultural Heritage System

SACHIN UBBARADA (CEPT, Ahmadabad)
For Landscape Management guidelines for
Iron Ore Mining

V. VENKATALAKSHMI (S.P.A, Delhi)

For Holistic Open Space system in School
Landscapes

COMMENDATION

MANJU YADAV (S.P.A, Bhopal)

For Critical Evaluation of landscape
consideration in Green Rating systems in India

ON WISDOM, VALUES AND LANDSCAPE ARCHITECTURE: TOWARDS SMART CITIES

The 10th Annual Conference was held at Pune aimed to bring into discussion the human values, their effect on urban landscape architecture and the wisdom involved in re-establishing the inseparable connection between them. Poised to emerge as one of the global powers of the 21st century, India targets to make its cities 'Smart'.

There is widespread international interest in the concept of Smart Cities- apart from the agenda of sustainability and energy conscious design, a Landscape Architectural approach is probably central to the success of their physical and social environment. The changing relationship of man and environment is the evidence of the change in human values. Traditional cities, governed by socio cultural values and wisdom were self-sustainable and rendered qualitative experience to the people. The modern city emerged with its unprecedented pace of growth and spread - and resultant blight. The focus gradually shifted from quality to quantity making the city ugly and increasingly detached from its people. With the modern city in the background the society looks forward to a 'livable city'.

One look at many cities today and it seems that our wisdom of making cities, the values we read from it and the urban landscape are seriously compromised. Two days of intense presentations and discussions- saw the following sub themes being explored :

The City Today - The Uncomfortable City Changing Values, globalisation & Landscape architecture - how we have got used to the idea that the City is a puzzle, and the burden of its solution lies with its users, not its makers.

The City Yesterday - The Traditional City as it was - of traditional knowledge and a wholesome past.

The City Tomorrow - The Modern City and the Twentieth Century, paradoxes of planning and how we walked away from wisdom.

Speakers from different background shared their ideas & vision about smart cities.



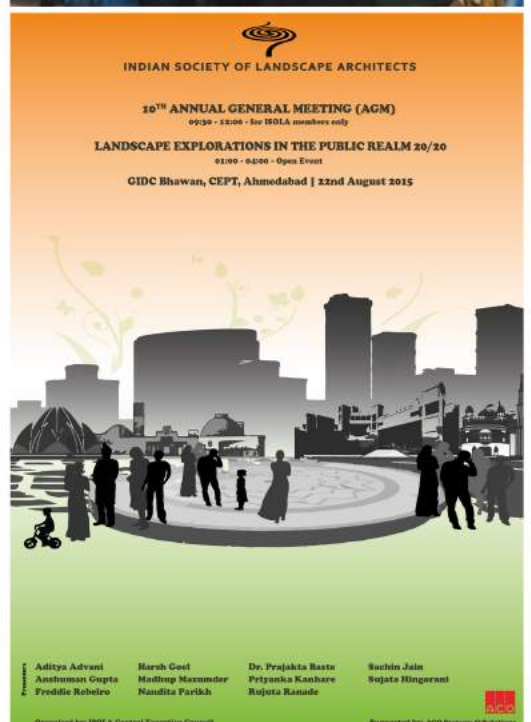
LANDSCAPE EXPLORATIONS IN THE PUBLIC REALM

ISOLA conducts its annual general meeting every year in the month of August/September in Ahmedabad and a number of members attend the meeting to discuss and deliberate on the working of the Society with the Executive Council members. Key decisions that impact the functioning of ISOLA are taken with the consensus of all members present. The audited accounts and the annual report of the Society are also tabled for approval of the members.

In addition to the AGM, the EC also puts together a small event of a topic relevant to the profession and invites the participation of all members.

In the 9th AGM held on the 13th of September 2014, the society attempted to explore THE WAY FORWARD - seeking to understand our legal status as a profession under the guidance of Sudhir Vohra.

In the 10th AGM held on the 22nd of August 2015, the meeting was followed by a small event- LANDSCAPE EXPLORATIONS IN THE PUBLIC REALM, wherein a series of presentations by our senior, young and student members on their individual/firm's engagement on government or public projects were made. A small description of the same is presented in next few pages.



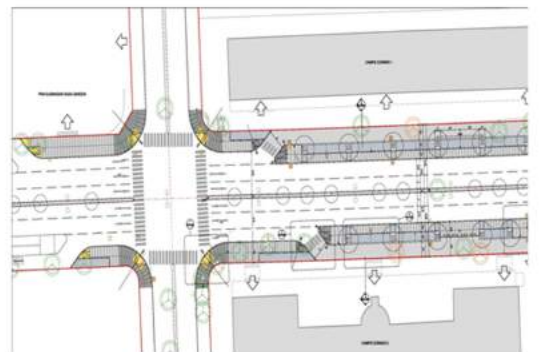
Anshuman Gupta *Vice President, Head of Projects-South Asia, Deutsche Bank AG; and, Co-founder and Director, The Foundation of Indian Cities*, researched and writes about urbanism and Indian cities. His presentation set the tone of the event identifying the dynamics and mechanics of successful, shared public spaces, at both a master plan level and their spatial and functional integration within the city fabric at a neighborhood scale.



Freddie Riberio *Associate Landscape Architect & Studio Leader, BDP India*, presented a narrative of the 'dressing up' of a traffic island as an unfolding of a Bollywood film. This small project undertaken to promote corporate branding, led to a short but exciting journey of discovery. Mangroves, salt pans, mud flats and the graceful 'lesser flamingo', all play their part in this delightful saga of triumph, in a tribute to the heroic and endangered Flamingos of Sewri in Mumbai.



Harsh Goel, *Director of Landscape Architecture & Urban Design, Stantec*, discussed designing and building safe and pedestrian-friendly streets. Using case studies across Ahmedabad, from South Bopal, Prahladnagar and Auda Garden, he shared possible design intervention across different street typologies.



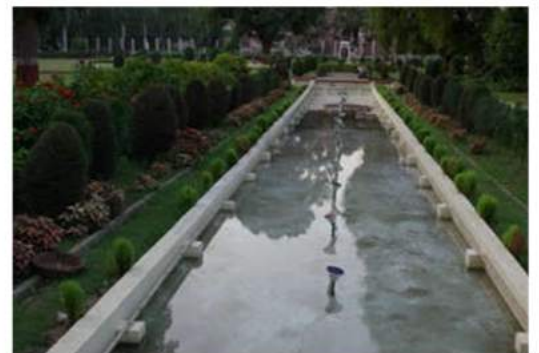
Madhup Mazumder, *Principal Landscape architect, Design Accord*, presented the firm's competition entry for the Landscape Master Plan and Tapas Udyan of GIFT city in Gujarat, illustrating strategies to make a liveable city of tomorrow. Thematic sketches depicted a Smart city that marry internationality with cultural identity and ecological fidelity. The central landscape forest that, recharges and re-supplies water, generates climatically-appropriate people-places and mitigates ecological imbalances through landscape restoration and new interventions were highlighted.



Nandita Parikh, *Co-founder, NMP Design and visiting faculty, Department of Landscape Architecture, SPA, Delhi*, presented the story of the High Line, a 2.33 km long linear urban parkway system in New York. Built on an elevated section of a disused railroad the High Line was redesigned and planted as an aerial greenway and rails-to-trail park. A successful private public partnership between the city of New York and Friends of the High Line demonstrates the value in creating new and fresh public spaces in the City.



Priyanka Sanjay Kanhare, *Assistant Professor at IDEA, INDUS University, Ahmedabad; landscape consultant, ODDdesign; and, artist*, shared her Masters' thesis project-Relocating and Design of Sayaji zoo. The presentation focused on the exploration and design of the Zoo that benefitted resident species and the surrounding human habitat as well, integrating them all with the larger public realm.



Rujuta Ranade, landscape architect, *BDP India*, reflected on the continuous process of evolution and how the patterns and language of the city change, transforming the entire character and identity of the place. Using one key element from the urban fabric, she mapped this evolution and let it gradually unfold through her presentation.



Sachin Jain, *Past president, ISOLA, Partner, S J A Consultants*, and visiting faculty, *SPA, New Delhi*, shared a project to highlight the possibilities of integrating open space systems of a city and circulation networks to create valuable and viable landscape resources. Using a successful example of TOD at the Nehru Place Metro Station in New Delhi, he illustrated how a project ensures safe and easy connectivity, vibrant urban open spaces and also be commercially sustainable.



Sujata Hingorani, *Partner, Oasis Designs Inc.*, showcased some of the firm's key public projects and the different ways in which the firm has helped to influence urban planning policy, with their initiatives and outreach programs. Transit Oriented Development (TOD) guidelines for pilot projects, UTIPEC Street design guidelines, the Sabarmati Riverfront Park, in Ahmedabad and the South Delhi Greenway Masterplan' were discussed.



IIIrd Semester students from SPA Bhopal – **Aditi Galande, Anchal Agarwal, Neha Apre, Sarvari Harpale, and Sonu Bothe** Presented the design process that were adopted to develop policies and guidelines which led to the development of Master Plan for Supa Taal, Jabalpur. They elaborated on the design strategies which aimed towards the qualitative negotiations of people and water and formation of community spaces.



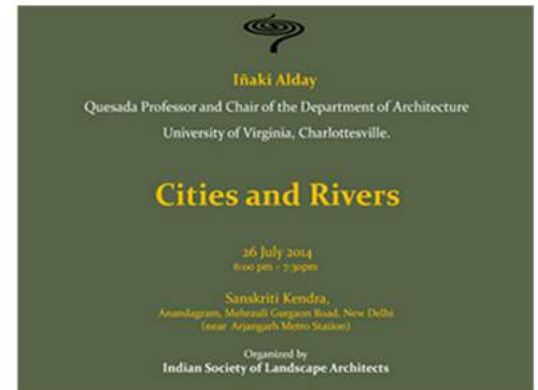
ISOLA CENTRE EVENTS

Exploring and Recovering Chinese Landscape Culture (2014)

A Lecture by Prof. Liu Hui, Director of the Department of Landscape Architecture, College of Architecture, Xi'an University of Architecture and Technology (XAUAT)- 'Exploring and Recovering Chinese Landscape Culture' in association with Aga Khan Trust for Culture (A KTC) was held on 3rd May 2014 at the India Habitat Centre.

**Cities and Rivers (2014)**

A talk by Iñaki Alday, Quesada Professor and Chair of the Department of Architecture, University of Virginia, Charlottesville 'Cities and Rivers' was organised by ISOLA, on 26th July 2014 at Sanskriti Kendra, New Delhi.

**Re-Centering Delhi (2014)**

An exhibition and two panel discussions on Re-Centering Delhi - Urban Design Speculations on the River Yamuna at the

Embassy of Switzerland on the 14th and 29th of November 2014 was supported by ISOLA.



CHAPTER EVENTS - MUMBAI CHAPTER

Our enthusiastic Chapters have organised events in different cities, throughout the year, some in collaboration with other professional bodies. Do visit the website to read more about chapter events.

PAANI KI KAHANI - THE STORY OF WATER (2014)

The ISOLA Mumbai MMR Chapter hosted the 3rd event of the S.D.Vaidya Memorial Lecture titled PAANI KI KAHANI - The Story of Water on the 15th of November 2014 at Rachana Sansad's Academy of Architecture, Mumbai. The event focussed on the important issue of Natural water resources and its management traditionally, in the present context and for the future, through a panel of illustrious speakers comprising of Ninad Bedekar, Mohan Rao, Dr.Himanshu Kulkarni, Anupam Mishra and Rajendra Singh.

**MUMBAI ON A ROAD TO KNOW WHERE? (2015)**

The 4th event of the S. D. Vaidya Memorial Lecture series titled 'Mumbai on a road to Know where?', was hosted on 28th November 2015. To draw attention of architects and landscape architects in the city of Mumbai, to various environmental and socio economic aspects of the development of the much

LAND TERRAIN WORKSHOPS (2015)

ISOLA Mumbai conducted two workshops on Land Terrain in the month of July, 2015.

These workshops were organized for the 3rd B.Arch students of D.Y. Patil College of Architecture, Nerul and Bharati Vidyapeeth College of Architecture, CBD Belapur, Navi Mumbai. The theme of the workshop was conceived by Ms Devayani Upasani Deshmukh. The intent of this workshop was to inculcate the basic understanding of terrain in students so as to create spatial experiences using land modulation.

debated Coastal road (36 Km. long, 8 lane). The erudite lectures of Mr. Prasad Modak, Ms. Shweta Wagh and Mr. Hussain, Mr. Rajiv Mishra and Mr. Ashok Datar. The lectures provoked series of questions related to transport, mobility and environmental efficacy.



CHAPTER EVENTS - DELHI CHAPTER

In an attempt to contribute to the vision of the government towards building an equitable and sustainable urban environment, ISOLA is committed to engage with thinkers and practitioners who can 'make a difference' to Indian cities.

Reading the Historic Landscape (2014)

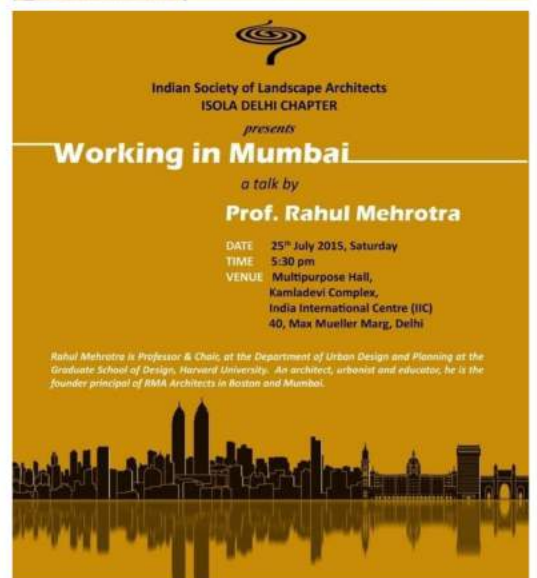
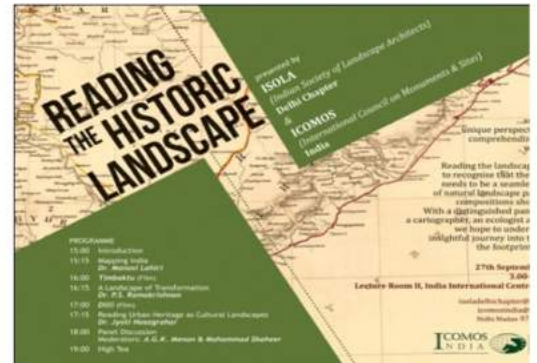
ISOLA Delhi NCR Chapter in collaboration with ICOMOS India (National Scientific Committee on Cultural Landscapes), held an event 'Reading the Historic Landscape' was held on Saturday, 27th September 2014 at the India International Centre (IIC) Annexe. The half day event explored unique perspectives in reading, comprehending and engaging with the context with experts from realms other than our own (a cartographer, ecologist, and an urbanist) to absorb the nuances of natural, cultural and historic landscapes and to set the stage for an the exchange of ideas and between landscape architects, heritage conservationists and associated disciplines.

20x20 Sessions:**Travels (2014) and Travels 2 (2015)**

Two 20x20 sessions had ISOLA Delhi chapter members briefly reflect on their 'Travels', on December 18th, 2014 and a sequel 'Travels 2' on 9th March 2015. The sessions included inspired presentations on a whirlwind tour across the world from the bustling metropolises to sunny beaches, the countryside and historic pilgrimage sites. With much to ponder and pause about the ways cities integrate multimodal transit; landscapes engage within and without; the journey of the humble tomato; shades of green; and, context and common sense.

'Working in Mumbai' (2015)

ISOLA, Delhi-NCR hosted a talk 'Working in Mumbai' by Prof. Rahul Mehrotra, Chair of the Department of Urban Design and Planning at the Graduate School of Design, Harvard University, U.S.A. on July 25th, 2015 at the India International Centre. Prof. Mehrotra reflected on the city and described how he came to make several critical choices in his work to address the times and attitudes expressed in a paralyzing multiplicity of architectural influences.



CHAPTER EVENTS - DELHI CHAPTER

Walk Series (2014-15 & 2015-16)

The ISOLA Delhi NCR Chapter Walk Series ran from October 2014-March 2015. It took place on weekend mornings, every two or three weeks and ran for about two hours. The walks were a good opportunity for ISOLA members to explore the city through

the eyes of senior landscape architects, architects and environmentalists. From historic precincts to designed parks, from an established forest to a nascent planned one, the series is a journey of discovery and engagement. The 2015-16 Walk Series is currently underway.

WALK SERIES

OCTOBER 2014- MARCH 2015

15TH NOVEMBER, 2014, SATURDAY
Garden of Five Senses
Mr. Pradeep Sachdeva

15TH NOVEMBER, 2014, SATURDAY
Lodhi Heritage Area Walk
Prof. Samir Mathur

20TH NOVEMBER 2014, SATURDAY
Humayun's Tomb World Heritage Site
Prof. M. Shaheer & Mr. Ratish Nanda

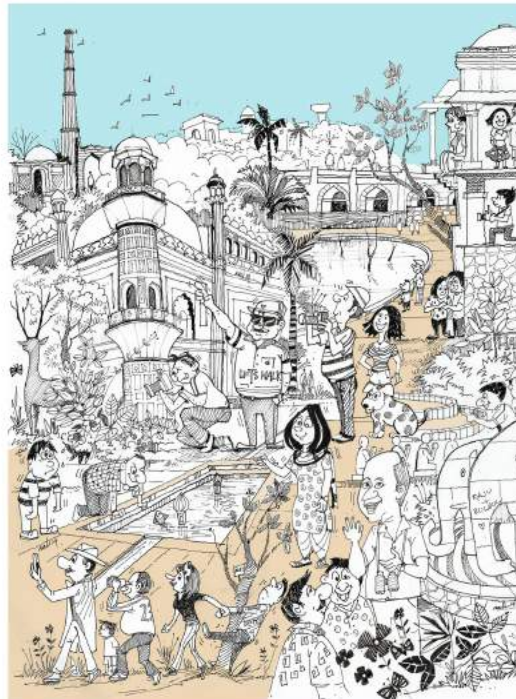
14TH DECEMBER, 2014, SATURDAY
Central Ridge
Vijay Dhasmana

10TH JANUARY, 2014, SATURDAY
Safdarjung Tomb and Gardens
Dr. Priyaleen Singh

14TH FEBRUARY, 2015, SATURDAY
Aravalli Biodiversity Park
Vijay Dhasmana

14TH MARCH, 2015, SATURDAY
Hauz Khas Complex
Ms. Nupur Prothi Khanna

To register please write to
rsvp.events.isoladelhichapter@gmail.com

**WALK SERIES**

SEPTEMBER 2015- MARCH 2016

26TH SEPTEMBER, 2015, SATURDAY
Aravalli Biodiversity park

Mr. Vijay Dhasmana

1ST NOVEMBER, 2015, SUNDAY

Red Fort

Dr. Priyaleen Singh

21ST NOVEMBER, 2015, SATURDAY

Hauz Khas Complex

Ms. Nupur Prothi Khanna

5TH DECEMBER, 2015, SATURDAY

Yamuna Biodiversity Park

Dr. Faiyaz Khudsar

30TH JANUARY, 2016, SATURDAY

Garden of Five Senses

Mr. Pradeep Sachdeva

12TH MARCH, 2016, SATURDAY

Raj Ghat & Shakti Sthal

Prof. Samir Mathur



CHAPTER EVENTS - BANGALORE CHAPTER

This year the Annual Conference is being organised by Bangalore chapter.

A series of pre-conference habba (kannada term for events) were conducted in a hands-on workshop/exhibition format, and, open calls for publication conducted across the city/region with multiple stakeholders such as NGOs, Public bodies, Institutions, etc. put out, to both spread awareness of the profession of landscape and the organization itself. Each habba was based on the topic of the conference - Water and Society - and addressed the three thematics to better inform the main conference event.

PROFESSIONALS SPEAK (2015)

ISOLA BANGALORE CHAPTER in collaboration with BMS College of Engineering, Department of Architecture held an event, 'PROFESSIONALS SPEAK' on 26th September, 2015 at BS Narayan Seminar Hall, BMSCE, Basavangudi. This habba, targeted to provide students an overview of the landscape architecture discipline through professional works undertaken at various scales and geographies in the realm of Landscape and Ecology, Urban Landscapes and Landscape Engineering.

**EXPERTS PERSPECTIVE (2015)**

A second habba on 22nd November 2015 at IIHS gave students, academicians and professionals in the field of Landscape Architecture an exposure to the integrated approach that is required to control the "Unplanned and Uncontrolled Urbanisation of the city of Bangalore". The talk was conducted by Dr. T.V.Ramachandra of Centre for Ecological Sciences, IISc, and Ms. Hita Unnikrishnan of ATREE.

**THE THESIS OPEN DAY (2015)**

The first of the several Habbas hosted at the Indian Institute of Human Settlements (IIHS) on 4th September, 2015, had recent Landscape Architecture graduates exhibit and present their thesis in order to

demonstrate the scales, issues and methodologies that governs the academic groundwork for the Landscape Architecture profession to a wider audience.



CHAPTER EVENTS - BANGALORE CHAPTER

BLUE RHYMES EXHIBITION (2015)

Blue Rhymes Exhibition ideated and conceptualized by LA Journal and designed by Srishti Institute of Art, Design & Technology. It looks at built and unbuilt contexts, narratives from the past and present, examples in practice and academics and traditional practices from Indian subcontinent that have shown diverse thinking and values in maintaining an evolved and symbiotic relationship with water.

**DESIGN WORKSHOP (2015)**

ISOLA Bangalore Chapter in collaboration with architectural institutions in the Southern region conducted a design workshop in accordance with the theme of the conference to help broaden the disciplinary framework of Landscape Architecture and build capacity of the profession among the students.



water and society
– the student interface
 exhibiting a collection of three distinct yet
 interrelated bodies of work
Reclaiming the Vrishabhavati, Bangalore, Karnataka
 A workshop mode design and planning session conducted by
 the ISOLA Bangalore Chapter with undergraduate students
 from architectural school in the city.
Urban Boundaries, an exploration on constructs of Time.
 Maltancherry, Cochin, Kerala
 A VII semester urban design studio conducted by faculty at
 the RVCA, Bangalore, in close association with the ISOLA
 Bangalore Chapter.
Water - precious in Design
 A student's design competition organized by the Landscape
 Foundation of INDIA, supported by LA, Journal of Landscape
 Architecture.
BMSCE, Bangalore MSRIT, Bangalore UVCE, Bangalore RVCA, Bangalore
ISOLA
BANGALORE
CHAPTER
 In collaboration
 with
LANDSCAPE
FOUNDATION
INDIA
21st – 23rd Jan, vismaya exhibition hall
rangoli metro art centre

WATER AND SOCIETY (2016)

Public exhibition water and society is being organized by ISOLA Bangalore Chapter during the Annual Conference, showcasing the a collection of student's works and their perspectives on the theme of the Conference itself. The exhibition is an eclectic mix of ideas, strategies, visions, narratives as well as analytics of the notion of water and its correlation and interface with the urban and the society at large. The perspectives displayed in the exhibition is an outcome of a rigorous engagement and introduction of the student fraternity to the landscape profession. The engagement was conceived as a platform to generate a productive dialogue with public agencies of the city to address development initiatives imperative to current trends of urbanization.

A WARM WELCOME TO ALL THE NEW ISOLA MEMBERS*(updated from January 2013 till date)***FELLOW MEMBER**

Mr. Aditya Advani	V-33/F 1994
Mr. Garlapati Anjan Reddy	V-33/F1995
Ms.Jasleen Kaur Waraich	V-33/F1996
Mr. Rajan Daniel	V-33/F1997
Mr. Suneet Mohindru	V-33/F1998
Mr. Suresh Shrikant Purandere	V-33/F1999
Ms.Vaishali Vikram Hingmire	V-33/F2000
Mr. Asit SenGupta	V-33/F2001
Mr. Chhitiz Mohan Gupta	V-33/F2002
Mr. Mano(M. K.)Kanika Singh	V-33/F2004
Ms.Poonam A Dewan	V-33/F2005
Ms.Pratima Marwah	V-33/F2006
Mr. Samir Khanna	V-33/F2007
Ms.Somya SinghVaskale	V-33/F2008
Ms.Sushma Jeyakumar	V-33/F2009
Mr. AyushRanjan	V-33/F2010
Mr. Indrajit Dutta	V-33/F2011
Mr. Mayank Kaushik	V-33/F2012
Mr. Narayan Shashtri	V-33/F2013
Ms.Rajini Itham	V-33/F2014
Ms.Rohini Venkataswami	V-33/F2015

ASSOCIATE MEMBER

Mr. Abhishek Sharma	S-81/A2013
Prof. Alpa Nawre	N-21/A2013
Ms.Divya Priyesh Shah	S-65/A2013
Ms.Harpreet Kaur	K-57/A2013
Ms. Jebalin G. P.	P-52/A2013
Ms.Laxmi Shadija Shukla	S-35/A2013
Ms.Madhura Arjun Lavand	L-5/A2013
Ms.Preethy Jacob	J-22/A2013
Mr. Priyesh Pankajbhai Shah	S-64 /A2013
Mr. Santanu Saha	S-75/A2013
Ms.Supriya Singh	S-39/A2013
Ms. Swati Nagpal	N-24/A2013
Ms.Amita Sharma	S-91/A2014
Ms.Mithila Mattoo	M-54/A2014
Ms.Rima Surender Khajanchi	K-69/A 2014
Ms.ShwetaKadam	K-68/A2014
Ms.Bandita De	D-25/A2015
Ms. Meenakshi Kumar	K-79/A2015
Ms.SwethaGowri	G-38/A2015
Ms.Vineetha P S	P-62/A2015
Ms.Preetanshi Singh	S-94/A2015

GRADUATE MEMBER

Mr. Ankur Jajpuria	J-21/G2013
Prof. Anupama Bharti	B-44/G2013
Ms.Anushri Barman	B-42/G2013
Ms.Ashwini Anil Aher	A-26/G2013
Mr. Dwaipayan Bhattacharya	B-37/G2013
Ms.Henya Stephe	S-74/G2013
Mr. Ishan Mohan	M-52/G2013
Ms.Kashmira Jagdish Gawade	G-33/G2013
Ms.Kavitha A.	A-21/G2013
Ms.Malvika Sameer Naik	N-20/G 2013
Ms.Muntazim Mahamood Inamdar	I-3/G 2013
Ms.Neeraja Shrinivas Hingne	H-8/G 2013
Ms.Neha Nitin Rajadhyaksha	N-23/G 2013
Ms.Netra VijaykumarPalkar	P-56/G 2013
Ms.Priyanka Arvind Patil	P-54/G 2013
Ms.Prutha Wasudeo Mathankar	M-53/G 2013
Ms.Renuka K. Devi	K-58/G 2013
Ms.Richa Sharma	S-68/G 2013
Ms.Salma S F	F-1/G 2013
Ms.Shakti Singh	S-67/G 2013
Ms.Shanmugga Rani A.	A-24/G 2013
Ms.Suma Jose	J-19/G 2013
Ms.VaidehiRaghunath Kumbhar	K-56/G 2013
Ms.Yashodini Shrikant Joshi	J-18/G 2013
Ms.Yogeshwari Kanagarajan	K-59/G 2013
Ms.Beena Vijaykumar Tindwani	T-15/G 2015
Ms.Deeksha Lalwani	L-6/G 2014
Ms.Divya Sharma	S-84/G 2014
Ms.Jayashree Mahana	M-55/G 2014
Ms.Kavita Mangesh Kolhe	K-77/G 2014
Mr. Om Deo Trimangal Kumar	K-72/G 2014
Mr. Ramanujam Sankaran	S-85/G 2014
Mr. Rameez Raja Gazi	G-34/G 2014
Ms.Tanuja Ulhas Godse	G-37/G 2014
Ms.Deepthi	C-29/G 2015
Mr. Jwalant Yogesh Patel	P-59/G 2015
Ms.Kinjal Rajen Parekh	P-61/G 2015
Ms Kripa Baby	B-48/G 2015
Ms.Manju Yadav	Y-4/G 2015
Ms.Nikilsha K	K-80/G 2015
Ms Priyanka Sarkar	S-93/G 2015
Ms. Priyanka Mathur	M-62/G 2015
Mrs. Sushmita Paul	P-60/G 2015
Ms. Swati Vinod Dahake	D-26/G 2015
Mr. Tapan Yatish Modi	M-60/G 2015
Ms. UzmaMariyam	M-57/G 2015
Ms. Prachi Chaudhary	C-30/G 2015

STUDENT MEMBERS

Ms.Divya Pilla	P-51/S 2013
Ms.Japneet Kaur	K-62/S 2013
Ms.NamithaSC	C-25/S 2013
Ms.Nandita Singh	S-72/S 2013
Ms.Sona Suresh	S-70/S 2013
Mr. Sunny Aggarwal	A-23/S 2013
Ms.Venkata Lakshmi V.	V-22/G 2013
Ms.Aditi Raj	R-44/S 2014
Mr. Amit Bhattacharya	B-46/S 2014
Ms.Divya Rani	R-41/S 2014
Mr. Kapil Dilip Natawadkar	N-25/S 2014
Ms.Kavuri Maneesha Keerthi	K-73/S 2014
Mr. MohammedShabbir Bhatia	B-47/S 2014
Ms.Pooja Yogesh Panchal	P-58/S 2014
Mr. Rahul K Sukumaran	S-92/S 2014
Ms.Rashmi Pramesh	P-57/S 2014
Ms.Rebekah Kurien	K-75/S2014
Ms.Reenu Vinod	V-31/S 2014
Ms. Shirali Vaidya	V-32/S 2014
Ms.Susan Vinu	V-29/S 2014
Ms.Tanvi Modak	M-59/S 2014
Ms. Ami Subodh Mehta	M-61/S 2015
Ms.Delsy Rose Thomas	T-16/G 2015
Ms.Dimpal KumarDas	D-27/S 2015
Ms.Gitanjali Bharali	B-50/S 2015
Mr. Huda Masroor	H-9/S 2015
Mr. Kshitij Shivajee	S-100/S 2015
Mr. Manavraaj Yadav	Y-5/S 2015
Mr. Nazeem Shaukat ali Shaikh	S-98/S 2015
Ms.Oorvi Singh	S-95/S 2015
Mr. Parvathi Ramesh	R-46/S 2015
Mr. Prabhakar Singh Bhaunt	B-51/S 2015
Ms. Prerana Vasant Sonawane	S-101/S 2015
Mr. Rahul Das	D-29/S 2015
Mr. Saikat Bhattacharjee	B-49/S 2015
Mr. Saurav Parmar	P-63/S 2015
Ms.Shivika Jain	J-23/S 2015
Ms. Shruti Sanjay Sinha	S-96/S 2015
Ms. Sonal Rajendra Thanawala	T-17/S 2015
Ms. Steffi Sharma	S-99/S 2015
Mr. Swayam Prakash Mohanty	M-58/G 2015
Mr. Vivek Ranjan	R-45/S 2015

EDUCATION BOARD
RESOURCE
MEMBERSHIP
ISOLA AWARDS
PROFESSIONAL CONDUCT
OUTREACH
WEBSITE
SOCIAL MEDIA CONNECT
NEWSLETTER

The committees have been setup to address a variety of issues that need attention, based on member interest and expertise. All ISOLA activities need enthusiastic participation from each and every member to enrich, contribute and speed up the deliverance. Members are invited to come forward and get involved in the following committees and contribute voluntarily.

All members interested in contributing their time and efforts in any of the above committees may please write to isolaoffice@gmail.com

Credits:
Members, ISOLA

Registered Office :

*Indian Society of Landscape Architects
No. 312 , 3rd Floor, ChitraRath Complex,
Off C. G. Road, Navrangpura,(Near President Hotel), Ahmedabad 380009, Gujarat, India
Tel: +91-79-40323110 Email : isolaoffice@gmail.com*