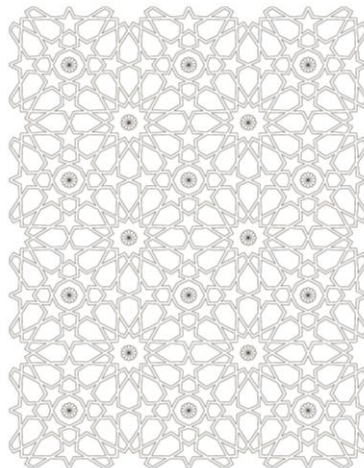




ISOLA HONOURS AND AWARDS 2014



The Landmark Award



**General Design
Award of excellence**



ISOLA Students' Award



ISOLA HONOURS AND AWARDS 2014

On 10th January 2015, ISOLA held the Jury for the ISOLA honours and awards at School of Planning and Architecture, Delhi. The eminent Jury comprised of :

Jury for the ISOLA Medal, General Design Award, The Landmark Award

Sujata Kohli, Varsha Gavandi, Sachin Jain

Jury for the ISOLA Students Award

Sujata Kohli, Varsha Gavandi, Madhup Mazumder



Sujata Kohli



Varsha Gavandi



Sachin Jain



Madhup Mazumder

One nomination was received for the Landmark Award, thirteen entries for the General Design Award and Nine entries were received for the Students Award for the Year 2014-2015.

All the award winning entries will be displayed at the ISOLA Conference 2015 to be held at Pune on February 20th and 21st 2015

AWARDS (PROFESSIONAL)

The ISOLA medal



No entries were received for the ISOLA Medal for the year 2014-15.

The Landmark Award



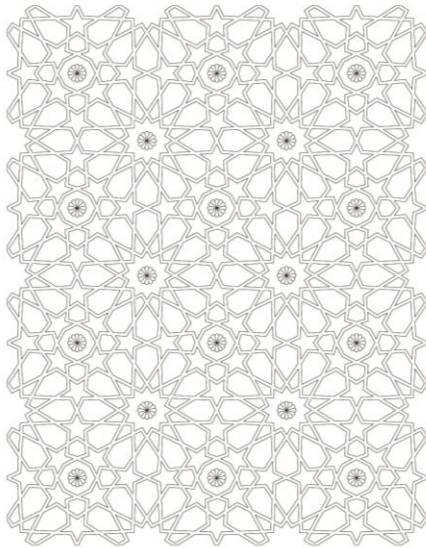
JURY COMMENTS

There was only one entry in this category titled "Rao Saheb Patwardhan Udyan, Bandra(W) Mumbai".

While the park is a significant public space contributing to the community, the jury noted that the design lacks in the continued relevance of the project's design expression. The jury unanimously decided to withhold the Award in the Landmark Category for the year 2014-2015.

AWARDS (PROFESSIONAL)

General Design Award of Excellence



JURY GENERAL COMMENTS

There were 13 entries in the General Design category. The standard of entries was substantially better than the ones submitted in preceding years & it was difficult to exclude some other entries from the commendation.

AWARD OF EXCELLENCE

ISOLA General Design is awarded to the “Guadalupe River Park-Confluence Park East”.

JURY COMMENTS

It is a very well-crafted public space which addresses all values. The engineering solution enables the design to be environmentally sensitive – riparian nature of landscape preserved along with amenities required of a good urban landscape, which fulfills the social & functional requirements of a successful public space. It stands out for innovative handling & detailing of individual spaces besides the well-designed overall scheme.

ISOLA Official Code Number: GD 07 (Award of Excellence)

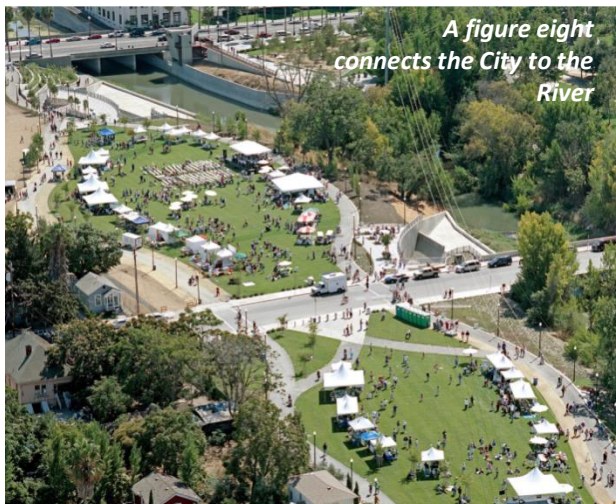
Project title: Guadalupe River Park- Confluence Park East, San Jose, California

Commencement date: Jan 2001

Project Completion: Sept 10, 2005

Project Size: 5 acres

Project Cost: unavailable



Located in Downtown San Jose, in the heart of Silicon Valley, this project is a part of an overall river front development. It is called Confluence Park since it is at the meeting point of two river streams: the Guadalupe River and the Coyote Creek. Their force is powerful enough to flood the downtown on many occasions. The clash of nature and city created the need for an engineering project that kept the river system intact while saving the city. A decision was made to create underground box culverts at this site that would by-pass the downtown and carry the flood waters downstream. This would save the city, and also protect the riparian river bank from any changes.

In 2001 the city of San Jose was at the epicenter of the computer revolution. It was a place where people from all over the world had gathered to change the future. It too was a confluence in its own right - of peoples and cultures. The inspiration of the project was the confluence of many systems. Natural rivers, manmade rivers, local peoples and world cultures: they all merged and collided here. This was an opportunity to acknowledge and celebrate all the contributors to this site.

If the role of everyone is seen as crucial, if all are seen as equal contributors in our common civilization, strife would diminish. This project is relevant in India where often differences are highlighted, but common effort is not. Embedding our public realm with art and features that remind us of our universal nature could be ways to change that. Creating well designed, multi use river parks that support both community events and riparian function, could further promote social and environmental integration.

COMMENDATION

Two commendations awarded to :

1. ROHNHERT PARK – COTATI REGIONAL LIBRARY GARDEN, CALIFORNIA for a strong innovative design theme relevant to the context, simple & subtle.
2. R & D CENTRE “ASTRAZENECA”, BENGALURU for well conceived design intent for each of available spaces. Nice use of local materials & simple technology with good detailing.

ISOLA Official Code Number: GD 10 (Commendation)

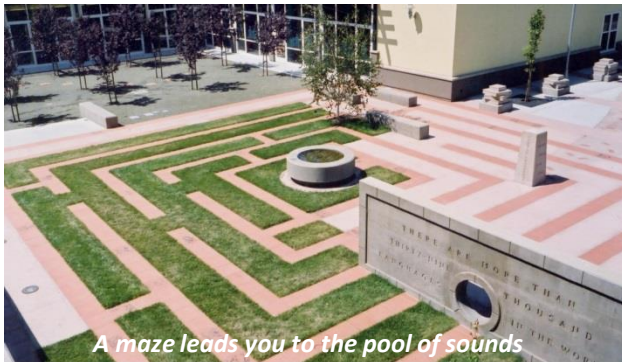
Project title: Rohnert Park- Cotati Regional Library Garden, California

Commencement date: July 2001

Project Completion: Jan 30, 2003

Project Size: 1500 sq. m.

Project Cost: unavailable



A maze leads you to the pool of sounds



Language History wall



Pool of Sounds



Alphabet Wall

The Landscape Architect says, “The human mindset is to objectify the Other, focus on “difference” and “apartness”. However, are we truly that different? Are there no basic cultural elements that unite us? We all speak a language, but “my language is not your language” is often used to identify our differences.

As repositories of knowledge, Libraries have played a valuable part in building a civilization’s foundations. They play a crucial role in both future education and past record keeping. The garden for this library in northern California was an opportunity to speak of the larger purpose of human civilization – which is to create culture through language. The one endeavor that unites all races is the yearning to speak and write. Focusing a multicultural group of people in America on their commonalities and not their differences, this project is an example of education design that could be also relevant in fractious India. Our schools and public spaces could be enriched with ideas, images and physical form that make us realize our universal brotherhood.”

ISOLA Official Code Number: GD 14 (Commendation)

Project title: AstraZeneca India, R&D Centre, Kirloskar Tech Park, Hebbal, Bangalore

Commencement date: Phase 1 – 2004, Phase 2 - 2008

Project Completion: Phase 1 – 2007, Phase 2 - 2009

Project Size: Phase 1 – 6.5 Acres, Phase 2 – 3.5 Acres

Project Cost: Phase 1 – 88 lakhs , Phase 2 – 55 lakhs



The Landscape Architect says, “Any design effort and its physical exemplification at site, is a culmination of the synergy between diverse and related professional disciplines, a process that transforms a barren site into a working mechanism to suit the clients requirement in all aspects.

We feel, in this project, this synergy worked more as a "symphony". This was one of the few projects we have dealt so far, where aspect was orchestrated well. In our visits to the project a few years post completion, we have experienced “a working landscape”, the spaces being accepted and utilized well by one and all within the campus, in a way it was intended by design, than being just a visual showpiece.”

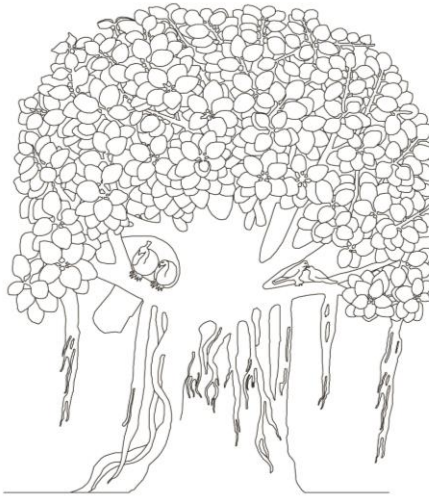


The “Think Tank”



AWARDS (STUDENTS)

ISOLA STUDENTS' AWARD



JURY GENERAL COMMENTS

There were 9 entries in the ISOLA students' award for academic year 2013-2014. The general trend of the entries had more emphasis on analysis and research and less on design resolution. As for few, the relevance of topic selected scored well, but for others not so significant.

ISOLA STUDENTS' AWARD

Is awarded to "Adaptive Reuse of Dry Dam Site".

JURY COMMENTS

The thesis is appreciated for its relevance of topic, in depth research, methodology and maturity of presentation. The graphical representation and clarity of thought deserves merit. Although the topic did not conclude with significant design resolution, however the inference models are relevant for similar cases.

COMMENDATION

No entries were selected for commendation award.

Kapil Sachdeva

Centre for Environment, Planning & Technology, Ahmedabad

ISOLA Official Code Number: ST 08

Thesis Topic: Adaptive Reuse of a Dry Dam Site

Case: Ramgarh Dam, Jaipur



ASSIMILATION OF WATER

- Average daily rainfall varies from mere 2.5mm to 10mm, so water will play a considerable role when it is assimilated in large volumes
- Harvesting the water in other forms (contour bunds, trenches etc.) would segregate the water and the water would be lost in evaporation and infiltration.
- Water should be collected as marked in Potential Area Map and should be brought to river

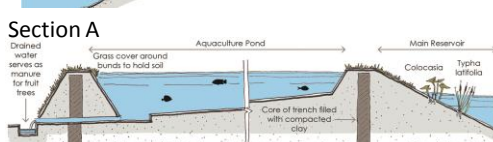
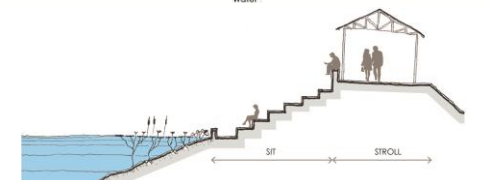


Figure 14: Water is lost in evaporation and percolation, not benefiting the community

Figure 15: Water can be used by community and also recharge for ground water considerably

Larger volume of water can be used for farm and non farm activities by local community. Also these water bodies would recharge the ground water to a greater extent.

Use of surface water would also divert the extraction of ground water, with time bringing back the value of surface water



Section B

The Landscape architect says " The landscape is not only what is visible at the very first instance , but is rather a result of many processes that formed it . These processes would continue to form a landscape in the time to come. It is the responsibility of landscape architect to cater to the visible/tangible and the invisible/intangible processes to reach to a sensible end. The present project of Ramgarh dam required the similar understanding and concern in coming to a useful end . It has been dry since last eight years which has been the result of change (or the processes) in catchment characteristics due to anthropogenic encroachments and activities . It was practically impossible rather illogical to try to achieve the original catchment characteristics which existed some hundred years before in lieu just to revive the dam to its original state . The study intended to cater to only those areas which could possibly be intervened (areas other than anthropogenic ownership) to use to the landscape in some form . The landscape potentials of these very left areas has been elaborated and hence proposed to benefit the local population. These interventions when applied in all the areas at local level, would benefit region as a whole . The dry reservoir area with a high potential to assimilate and hold water has not only been proposed to do so but the other manifold benefits it can offer has been envisioned thereof. The various economic ventures in this scenario would not only promote the local population to achieve the envisioned setup but would also lure the government to advocate the potential of the place. The Dam also known as Ramgarh Lake would again be acknowledged in the recreational aspects too. "

REGIONAL PROPOSALS

It is practically not desirable and possible to come up to an "ideal" proposal. Instead considering the dam as a mere motive - Hence

"Optimal use of water (rain water) locally at community and village level should be the first priority"

Several interventions can be done at community level to improve the life of people

AUGMENTATION OF WATER

CHANNELISATION OF WATER

Cleaning of undesirable barriers, grading of land cover to bring water to desirable locations



Figure 16: Water is lost in evaporation and percolation, not benefiting the community

Figure 17: Proper grading allows water to accumulate at desired locations

"Depressions and undulations on ground can store a lot of rainwater. This stored water is eventually lost by evaporation and infiltration affecting direct surface runoff"

Backfilling of trenches at the foothills to channelise water to river

Vegetative measures on backfilling would also enable water to enter into hilly terrain

Backfilling of trench and putting bar trench to prevent grazing

Water flow channel through bar trench

Water flow channel through bar trench

Water flow channel through bar trench

Water flow channel through bar trench

Water flow channel through bar trench

Water flow channel through bar trench

Water flow channel through bar trench

Water flow channel through bar trench

Water flow channel through bar trench

Water flow channel through bar trench

Water flow channel through bar trench

Water flow channel through bar trench

Water flow channel through bar trench

Water flow channel through bar trench

Water flow channel through bar trench

Water flow channel through bar trench

Water flow channel through bar trench

Water flow channel through bar trench

Water flow channel through bar trench

Water flow channel through bar trench

Water flow channel through bar trench

Water flow channel through bar trench

Water flow channel through bar trench

Water flow channel through bar trench

Water flow channel through bar trench

Water flow channel through bar trench

Water flow channel through bar trench

Water flow channel through bar trench

Water flow channel through bar trench

Water flow channel through bar trench

Water flow channel through bar trench

Water flow channel through bar trench

Water flow channel through bar trench

Water flow channel through bar trench

Water flow channel through bar trench

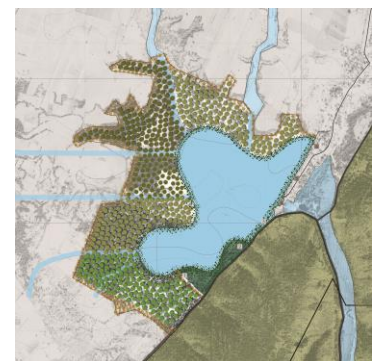
Water flow channel through bar trench

Water flow channel through bar trench

Water flow channel through bar trench

Water flow channel through bar trench

Water flow channel through bar trench



Plan

ISOLA HONOURS AND AWARDS 2014

List of Entries received

Entries for **ISOLA LANDMARK AWARD**

- | | | | |
|----|-------|------------------------------------|-------------------------|
| 1. | LA-01 | Rao Saheb Patwardhan Udyan, Mumbai | Sheila Gopal Foundation |
|----|-------|------------------------------------|-------------------------|

Entries for **GENERAL DESIGN CATEGORY**

- | | | | |
|-----|-------|--|-----------------------|
| 1. | GD-01 | G A R Landscape | Garlapati Anjan Reddy |
| 2. | GD-02 | Sama Landscape Architects | Manjari Mahajan |
| 3. | GD-06 | Karmavir Ghatge & Associates | Karmavir Ghatge |
| 4. | GD-07 | RHAA Landscape Architecture & Planning | Aditya Advani |
| 5. | GD-08 | RHAA Landscape Architecture & Planning | Aditya Advani |
| 6. | GD-09 | RHAA Landscape Architecture & Planning | Aditya Advani |
| 7. | GD-10 | RHAA Landscape Architecture & Planning | Aditya Advani |
| 8. | GD-11 | Salient, Kolkata | Anuradha Rathore |
| 9. | GD-12 | Salient, Kolkata | Anuradha Rathore |
| 10. | GD-13 | Salient, Kolkata | Anuradha Rathore |
| 11. | GD-14 | Design Milieu landscape architects | Kannan Somasundaram |
| 12. | GD-15 | Design Milieu landscape architects | Kannan Somasundaram |
| 13. | GD-16 | Oasis Designs Inc. | Sujata Hingorani |

Entries for **STUDENTS' AWARD CATEGORY**

- | | | | |
|----|--------|-------------------------|---|
| 1. | ST- 03 | Amruta Shrikant Padhye | Dr. Bhanuben Nanavati College of Architecture |
| 2. | ST- 05 | Ketaki S. Randive | Dr. Bhanuben Nanavati College of Architecture |
| 3. | ST- 07 | Kashmira J. Gawade | Dr. Bhanuben Nanavati College of Architecture |
| 4. | ST- 08 | Kapil Sachdeva | CEPT University, Ahmedabad |
| 5. | ST- 09 | Neeraja S. Hingne | Dr. Bhanuben Nanavati College of Architecture |
| 6. | ST- 12 | A. Shanmugga Rani | SAP, Anna University, Tamil Nadu |
| 7. | ST- 13 | Netra Vijaykumar Palkar | CEPT University, Ahmedabad |
| 8. | ST- 14 | Ashwini Anil Aher | Dr. Bhanuben Nanavati College of Architecture |
| 9. | ST- 15 | Eldo Alias | CEPT University, Ahmedabad |

Secretariat:

Indian Society of Landscape Architects

312, Chitrarath Complex, Off CG Road, Near President Hotel, Navrangpura, Ahmedabad 380009 (Gujarat) India

Ph. +91-79-40323110, Email: isolaoffice@gmail.com, www.isola.org.in