



13TH ISOLA CONFERENCE

REIMAGINING LANDSCAPES

IDENTITY | APPROACH | STEWARDSHIP



ISOLA

ORGANIZED BY

INDIAN SOCIETY OF LANDSCAPE ARCHITECTS

KOCHI
KERALA, INDIA



15-16
FEBRUARY
2019

2 DAYS | 6 SPEAKERS | 4 WORKSHOPS
+ 3 POST-CONFERENCE TOURS



REIMAGINING LANDSCAPES

IDENTITY | APPROACH | STEWARDSHIP

As India and the world confront the challenges of rising waters, fragile ecosystems, extreme climate events, polluted cities, rapid, unplanned development and degraded environments, equitable healthy living environments and continued ecological appropriateness have become critically endangered. The self-healing capacity of natural systems is becoming severely threatened.

The role of the landscape architect transcends boundaries, in integrating intangible values of culture, people, places, land, water, air, context and site-specific conditions into ecologically healthy places to meet present and future challenges. Landscape architects play a critical role in synthesizing a range of professional expertise and skills and are best trained to function as members and heads of multi-disciplinary teams that can work on healing the Earth.

We come from a rich tradition of ecological wisdom and landscape aesthetics; a tradition that can help us direct, distinguish and protect the ecological processes that will define the future of the land and our habitats. The state of Kerala is symbolic of the juncture at which landscape architects stand today. Unquestionably God's own country, its ecological heritage is abundant yet finite and fragile. How we will address the ecological processes inherent in this land, and across the world, through practice and academia, in the years to come, will be our lasting legacy as a profession.

The intent of the conference is to learn from pioneers, share with our peers, and educate policy makers in the role that landscape architects in India must play; a role that places us at the forefront of ecological processes and design practice. Ecological democracy is a new and exciting field that combines the forces of ecology and participatory democracy to design urban landscapes that help us to create resilient communities." To understand also how a landscape reacts to a change or disturbance over time on its own or how human intervention can help it, can help us imagine ways of mitigating the effects of future disturbances. It is vital to understand how ecological process is addressed by designers across the globe, as it is to study how Nature adjusts to changes over time.

A few landscape and planning related professionals around the globe have been using ecological principles and processes to guide and inform their work. It is time to learn from them, as well as from the almost-lost cultural practices that for centuries have been using the Earth's natural processes and rhythms as a basis for development and design. It is time to study, design and create landscapes with ecological processes as their primary function.



13TH ISOLA CONFERENCE
FEBRUARY 15 & 16, 2019
KOCHI, KERALA, INDIA

SPEAKERS



John Button is a Permaculture designer, educator and consultant, with over thirty years experience in Australia, South and South East Asia, Africa, South America and Europe, through broadly diverse climatic, social and economic conditions, working with individuals, institutions, commercial enterprises and on his own behalf. Originally studying under the founder of Permaculture, Bill Mollison in 1980, and later with Lea Harrison and internationally renowned community designer Max Lindegger, he has since worked as consultant, teacher and project coordinator through south and south east Asia, Australia and Europe. Mollison asked John to present Permaculture to *Plan International* and he subsequently worked with them throughout South East Asia over a period of two years, teaching courses and consulting on their community development programmes.

In India, he was working on projects funded by various sources, including WWF, MS Swaminathan Foundation, AusAID. John created the original Permaculture design for Green School, Bali. He spent eight years in Tiruvannamalai co-ordinating the project to reforest the sacred mountain Arunachala, along with regenerating other 'wastelands' establishing a huge nursery (which precipitated the largest temple garden in India), and establishing a highly successful and beautiful Permaculture Demonstration. He has facilitated a number of workshops and courses, and participated in other regeneration and transformational projects in India and elsewhere; all were based on the empowerment of the local people.

Author of *Tibetan Sustainable Living Project*, a working manual for & received by HH, the Dalai Lama, 2003, published with Jonathan Halpern



Yossapon Boonsom is Co-founder and director of Shma Company Limited, a landscape architectural firm based in Thailand. Shma Company Limited is a landscape creative platform that aims to make the Earth better by working towards '*inclusive territory*'. This landscape design firm uses the principle of a human-centred approach to understand human behaviors, needs, insights throughout the design process to improve the lives of people living the ongoing and future city challenges. This creative and interactive approach requires not only a collaborative platform to pull all the resources and tools from different stakeholders, shareholders, organizations and multidisciplinary to implement the territory, but also, it broadens perspectives to identify the appropriate strategies.



Gena Wirth is the Design Principal at SCAPE, a landscape architecture and urban design studio based in New York. SCAPE works to integrate natural cycles and systems into environments across all scales, through diverse forms of landscape architecture – built landscapes, planning frameworks, research, books, and installations – with the ultimate goal of connecting people to their immediate environment and creating dynamic and adaptive landscapes of the future.

Trained in landscape architecture, urban planning and horticulture, Gena draws from her interdisciplinary training to create ecologically rich and culturally relevant landscapes from the infrastructural scale to the site level. Gena leads the design on several significant projects in the office and translates research into practice, layering ecological and cultural vision into design work across the firm. Gena was on the original Oyster-ecture team and was the Project Manager for SCAPE's involvement in SIRR, studying large-scale harbor-wide strategies for coastal protection measures that will be utilized in preparation for the next Superstorm. She was also the Project Manager for SCAPE's winning rebuild by design proposal, 'Living Breakwaters', a climate change resiliency strategy for the South Shore of Staten Island.

Gena holds a Master of Landscape Architecture and Master of Urban Planning with Distinction from the Harvard University Graduate School of Design and a Bachelor of Science in Horticulture from the University of Delaware.

SPEAKERS



John D. Liu was born in the United States but has worked internationally for 40 years. John helped to open the CBS News Bureau in Beijing and worked throughout the 1980s and early 1990s as an international television producer and cameraman with CBS News, RAI (Italian State Television) and ZDF (German State Television) covering geo-political events including the rise of China from poverty and isolation and the collapse of the Soviet Union. In the mid-1990s John founded the Environmental Education Media Project (EEMP) to help educate the public about environmental and ecological issues first in China and then worldwide and directed the EEMP until 2017. John has filmed, written, produced, directed and presented many films that have been seen worldwide on many ecosystems.

Following his documentation of China's Loess Plateau, Mr. Liu became an accidental academic receiving many visiting research fellowships to continue researching from a number of organizations. From 2003–2006, Mr. Liu was a visiting Fellow in the Faculty of Applied Sciences and the Faculty of the Built Environment at the University of the West of England (UWE), in 2006 he was named the Rothamsted International Fellow for the Communication of Science at the Rothamsted Research Institute of the UK, From 2008 to 2012 Mr. Liu pursued graduate studies at Reading University, In 2009 Mr. Liu was an Assistant Research Professor at George Mason University, from 2010–2013 he was a Senior Research Fellow with the International Union for the Conservation of Nature (IUCN) and in 2013–2014, Mr. Liu was a visiting fellow at the Critical Zone Hydrology Group, Vrije University Amsterdam. Mr Liu is currently Ecosystem Ambassador for the Commonland Foundation and a visiting research fellow at the Netherlands Institute of Ecology of the Royal Netherlands Academy of Arts and Sciences (NIOO/KNAW).



Dr. T. V. Ramachandra, who holds a PhD in Ecology and Energy from the Indian Institute of Science, has established an active school of research in the area of energy and the environment. His work as head of several Energy and Environmental Research Organizations like the CES, ENVIS, Astra, CiS-TUP etc. has been pioneering and has earned him national and international acclaim, including Johny Biosphere Award for Ecology and Environment, the Energy Legend, ENVIS award, Satish Dhawan Young Scientist Award, Karnataka State Parisara Award and many more.

His research interests cover a broad spectrum of the environmental field, ranging from aquatic ecosystems, biodiversity, ecological modeling and Western Ghats ecology to energy systems, renewable energy, energy conservation, energy planning, geo-informatics and further to environmental engineering education and curriculum development at the tertiary level. In addition to publishing numerous research papers in reputed national and international journals and symposiums, Dr. Ramachandra has also delivered several plenary lectures at national and international conferences. His experience in guiding masters and doctoral students and his expertise at conducting training programs and workshops are noteworthy.

WORKSHOPS



W1

WORKSHOP 1 Living Water

LEAD BY: Latha Raman, DeWats

SESSION 1 | W1.1

Introduction: Mechanics of aquatic ecosystems - the processes at work and how they function together as a system
Applications in the designed landscape

SESSION 2 | W1.2

Case studies of different applications for wetland mechanisms:
Naturally self-cleaning water bodies
Constructed wetlands for waste water treatment
Restoring ecosystem processes in dead water-bodies
Treatment and storage of storm run-off for reuse, using natural systems

SESSION 3 | W1.3

Addressing urban water-courses:
LIVE PROJECT:
Thevara-Perandoor canal system
Problem definition and analysis
Approaches
Discussion
Conclusion

W2

WORKSHOP 2 Gardens that don't need gardening

LEAD BY: Paul Blanchflower,
Auroville Botanical Gardens,
Puducherry

SESSION 1 | W2.1

Native plants in the planting-palette:
Context - Where and why to use native plants
Environmental analysis
Choosing the right plants based on suitability
Building a plant-palette: what goes together, what doesn't
Designing with a palette of natives
Sourcing/Propagation
Designing plantings that combine natives with conventional nursery stocks
Potential and pitfalls of working with natives

SESSION 2 | W2.2

PART 1:
AVBS and native plants
Introducing some native plants good for use in planting design
Some projects presenting planting schemes with natives
PART 2:
Garden as Permaculture
What is Permaculture?
Why build a Permaculture garden?
When to consider designing your garden as a Permaculture?
HOW: Steps in the process?

SESSION 3 | W2.3

DESIGN CHALETTE
Permaculture Design for a Public Landscape

W3

WORKSHOP 3 Flow with Nature - Drainage design following natural systems

LEAD BY: SCMS Water Institute,
Kochi with Dr. T. V Ramachandra

SESSION 1 | W3.1

Introduction: Hydrologic processes
Mechanics of run-off generation
Factors that determine run-off coefficient of a catchment
Principles in surface hydrology (drainage)
Water-logging and flooding
Quantity and quality of run-off
Hydrology of human-modified landscapes

SESSION 2 | W3.2

PART 1:
Case studies in urban hydrology:
Problems and solutions
PART 2:
Drainage design using the principles of natural systems: Concepts and approaches

SESSION 3 | W3.3

LIVE PROJECT:
Panampilly Nagar neighbourhood
Problem definition and analysis
Discussion
Conclusion

W4

WORKSHOP 4 The 'How' of Landscape Installations

This multi-session workshop will bring up the latest in technology for landscape installations



13TH ISOLA CONFERENCE
FEBRUARY 15 & 16, 2019
KOCHI, KERALA, INDIA

POST CONFERENCE

TOURS

SUNDAY, 17 FEBRUARY 2019



T1

TOUR 1 Kumarakam Resorts

COST: RS. 1,500.00 PER PERSON



KUMARAKOM LAKE RESORT

The rooms, villas and suites at Kumarakom Lake Resort are a perfect blend of Kerala's traditional architectural charm with luxurious, modern.
<http://www.kumarakomlakeresort.in>

COCONUT LAGOON is located upon the Vembanad lake, one of India's largest inland lakes with its own distinctive ecology that supports a plethora of natural life. There's only one way to get to Coconut Lagoon: over the water.

Situated on the shores of the Vembanad Lake, the longest backwater lake in Kerala, **ZURI KUMARAKOM RESORT** has breathtaking views of the serene backwaters. The fresh sea breeze, miles of serene backwaters and swaying coconut palms all welcome you to an unforgettable experience of luxury and peace. The dreamy state of Kerala, the southern tip of the Indian peninsula is often referred to as 'God's Own Country' due to its pristine natural beauty.

Itinerary

BUS FROM HYATT	9.30 AM
HOUSE BOAT FROM THANEERMUKKOM	11.00 AM
KUMARAKOM LAKE RESORT	11.30 AM
LUNCH	12.30 PM
COCONUT LAGOON	2.00 PM
ZURI RESORT	3.30 PM
BACK TO THANEERMUKKOM	5.30 PM
BACK TO HYATT	7.00 PM

T2

TOUR 2 Kochi-Muziris Biennale

COST: RS. 1,500.00 PER PERSON



As an artist-initiated organisation, the **KOCHI-MUZIRIS BIENNALE** was founded on the conviction that art is essential in society. The Kochi Biennale Foundation oversees a comprehensive programmes division that designs and organises critical education and outreach initiatives throughout the year. These programmes include exciting talks, conferences, performances, educational interventions, workshops, and other forms of wide public engagement.
<http://kochimuzirisbiennale.org/>

Itinerary

BOAT FROM HYATT	9.30 AM
KOCHI BIENNALE	10.00 AM
LUNCH	1.00 PM
BACK TO BOAT	5.00 PM
SUN SET	6.00 PM

Artworks shown here are from the past editions of Kochi-Muziris Biennale



T3

TOUR 3 Iringole Kavu & Paniyeli Poru

COST: RS. 1,500.00 PER PERSON



IRINGOLE KAVU is a famous Hindu In forest temple dedicated to Goddess Durga, situated in Kunnathunad Taluk of Ernakulam district, 2.5 km from Perumbavoor. This is one of the 108 Durga Temples in Kerala believed to have been consecrated by Lord Parasurama, the sixth avatar of Lord Vishnu.
https://en.wikipedia.org/wiki/Iringole_Kavu

PANIYELI PORU has an amazing sight of Periyar river flowing through rocks and between dense rain forests. The vast view of distant green hillocks and the tranquility around the place is really great.
https://wikitravel.org/en/Paniyeli_Poru

Itinerary

BUS FROM HYATT	9.30 AM
IRINGOLE KAVU	10.30 AM
LUNCH	1.00 PM
PANIYELI PORU	2.00 PM
BACK TO HYATT	7.00 PM



13TH ISOLA CONFERENCE
FEBRUARY 15 & 16, 2019
KOCHI, KERALA, INDIA

PROGRAM*

13TH ISOLA ANNUAL CONFERENCE 2019 KOCHI, KERALA

DAY 0: THURSDAY | 14 FEBRUARY 2019

VENUE: **BOLGATTY PALACE & ISLAND RESORT**

04:00 – 05:00 PM **WORKSHOP LEADERS MEETING AND BRIEFING**

05:00 – 06:30 PM **ISOLA NATIONAL EC MEETING**

07:30 – 09:30 PM **DINNER [FOR ISOLA MEMBERS ONLY]**

DAY 1: FRIDAY | 15 FEBRUARY 2019

VENUE: **LULU GRAND HYATT**

08:30 – 09:30 AM **REGISTRATION**

09:30 – 10:30 AM **INAUGURAL SESSION**

10:30 – 10:45 AM **TEA**

10:45 – 12:45 AM **SPEAKERS SESSION 1: IDENTITY**

12:45 – 01:30 PM **LUNCH**

01:30 – 03:30 PM **SPEAKERS SESSION 2: APPROACH**

03:30 – 03:45 PM **TEA**

03:45 – 05:00 PM **WORKSHOPS:**

INTRODUCTION & PRELIMINARIES OF WORKSHOPS

PAPER PRESENTATION

05:00 – 05:15 PM **TEA**

05:30 – 06:30 PM **WORKSHOPS:**

SESSIONS 1 | W1.1, W2.1 & W3.1

SITE VISIT

SESSIONS 2 | W1.2, W2.2 & W3.2

07:00 – 08:00 PM

CULTURAL PROGRAM:

TRADITIONAL ART FORMS OF KERALA

08:00 – 10:00 PM

GALA DINNER

DAY 2: SATURDAY | 16 FEBRUARY 2019

VENUE: **LULU GRAND HYATT**

09:30 – 11:00 AM **WORKSHOPS:**

SESSIONS 3 | W1.3, W2.3 & W3.3

WORKSHOP W4

PAPER PRESENTATION

11:00 – 11:15 AM **TEA**

11:15 – 01:15 PM **SPEAKERS SESSION 3: STEWARDSHIP**

01:15 – 02:00 PM **LUNCH**

02:00 – 04:30 PM **AWARDS FUNCTION**

04:30 – 04:45 PM **TEA**

04:45 – 05:30 PM **PANEL DISCUSSION**

WORKSHOPS SESSION PRESENTATION

FELICITATION

VOTE OF THANKS BY CONVENOR

DAY 3: SUNDAY | 17 FEBRUARY 2019

SINGLE DAY TOURS | 09:00 AM – 07:00 PM

TOUR | T1 **KUMARAKOM RESORTS**

TOUR | T2 **KOCHI-MUZIRIS BIENNALE**

TOUR | T3 **IRINGOLE KAVU & PANIYELI PORU**



REIMAGINING LANDSCAPES

IDENTITY | APPROACH | STEWARDSHIP



I S O L A

ISOLA ANNUAL CONFERENCE FEBRUARY 15-16, 2019 KOCHI, KERALA

Indian Society of Landscape Architects
www.isola.org.in

CONFERENCE ORGANIZED BY
ISOLA Kerala Chapter

COMMUNICATION ADDRESS
26/2409B Thevara Ferry, Kochi 682013
Kerala, India

CONTACT
+91 7012307599
isolaconference@gmail.com

REGISTRATION, DETAILS OF
LANDSCAPE TROPHY [UG & PG]
& MORE INFORMATION
AVAILABLE ON:

<http://www.isola.org.in/conference/>

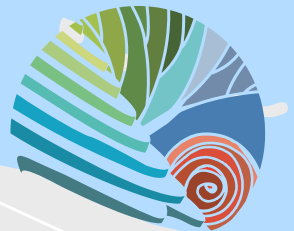


ERNAKULAM

LULU
GRAND
HYATT

BOLGATTY
PALACE
& ISLAND
RESORT

KOCHI



HOST CITY

Kochi has attracted explorers and travellers to its shores for over six centuries. The port city on the tropical Malabar Coast is a fascinating blend of sea & back waters, lush nature, giant Chinese fishing nets, synagogues, ancient mosques and medieval Portuguese & British Raj architecture. Here, landscape is an integral part life and the region is blessed with amazing nature—rain forests, wildlife sanctuaries, biosphere reserves, hills, cliffs, backwaters, lakes and sea shores. The region is equally well-known for its rich heritage and culture as well as its diverse traditional cuisines.

*There may be minor changes in the final schedule and the program will be updated continuously up to the conference.