



I S O L A

Indian Society of Landscape Architects



ISOLA20 awards 10

On Monday, 4th January'2010, ISOLA held the Jury for the ISOLA honors & awards.

The eminent jury comprised of **Prof. Ram Sharma, Mr. Satish Khanna and Prof. M. Shaheer.**

One nomination was received for the ISOLA Medal. Two nominations were received for the Landmark Award and 12 entries for the General Design Award. Four entries were received in the Students' Award category.

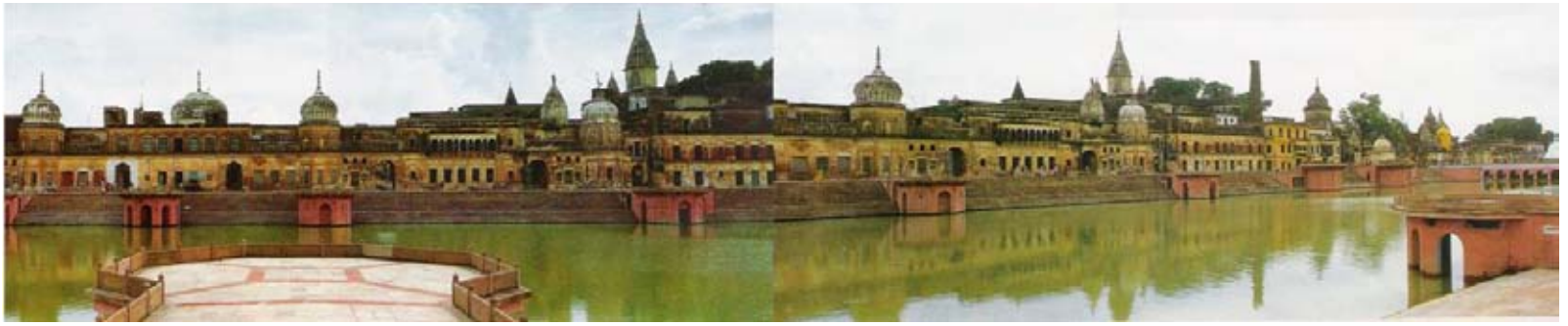
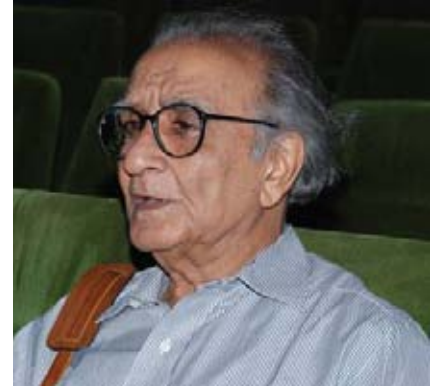
All award winning entries will be displayed at the ISOLA Conference 2010 to be held at Goa on the 29th-30th Jan' 2010.

The ISOLA Medal

The ISOLA Medal has been awarded to **Prof. Ravindra Bhan** for his lifetime achievements and contributions to the profession which have had a unique and lasting impact on the welfare of the public and the environment.

Prof. Ravindra Bhan, is a pioneer in the field of Landscape Architecture in India. He completed his formal architectural education with B.Arch from Washington University, St. Louis, Missouri, U.S.A and Masters in Landscape Architecture from University of Pennsylvania, U.S.A.

Prof. Bhan came on a Ford Foundation assignment to set up the Department of Landscape Architecture at the School of Planning and Architecture at New Delhi. He was heading the Department in its first decade. Earlier he was teaching at Washington University, St. Louis, Missouri, U.S.A and University of Pennsylvania.



Throughout his career, he has handled varied projects, both in Architecture and Landscape where design approach is guided by site and the constraints and potentials it offered. Some of his projects include Shakti Sthala-memorial for Late Prime Minister Indira Gandhi, Development plans for Ayodhya Ghats, Master planning and Site development for Rabindra Sarovar, Andrews Ganj Housing for HUDCO, Landscape design for Kovalam Beach Resort, Mughal Sheraton hotel at Agra, Golden Temple Corridor Complex at Amritsar in Punjab, Site Development and landscaping of 500 Acres township of Chambal Fertilizers at Kota.

Besides many National & International Awards he was also awarded the prestigious Aga Khan Award for Architecture and Landscape Architecture in 1980 for the Mughal Sheraton Hotel at Agra. It was a contemporary building with the spirit of Traditional Mughal Architecture. He has been a member of various advisory councils & also a former member of Delhi Urban Art Commission.

Prof. Bhan currently practises at New Delhi and is associated with prestigious projects like the Integrated development of Samadhi Complex at New Delhi, Site development & renovation of Heritage Hotel at Pahalgam in Kashmir.

General Design Category

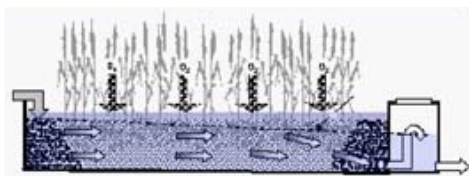
Award of Excellence

The award recognizes site-specific works of landscape architecture or urban design. The criteria for consideration was the quality of design and execution, design context, environmental sensitivity and sustainability, and design value to the client and to other designers.

Two entries were selected by the jury to receive the award of excellence in the General Design award category.

Mr. Anuj Malhotra, Good Earth Consultants, Ahmedabad (GD-201)

Project: Sindhu Baug (Public Park)
Location: Ward 7D, Gandhidham, Kutch
Client: SRC Ltd, Adipur
Start date: August'2005
Completion date: September 2008
Project Cost: 2.4 Crores
Total Area: 1.75 Acres



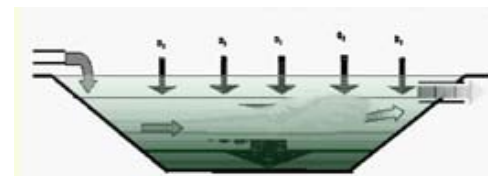
Section through planted filter



View of the planted filter



Aerating water foundation in the water channel



Section through polishing pond



Polishing pond

The site is located in Gandhidham, Kutch which falls in the “hot and arid” region of India and receives less than 200mm of rainfall annually. Water is scarce and where present has high TDS. Given the constraints of climate and site, it was essential that the availability and usage of water take center-stage in the design of the park. The park design integrates a wastewater treatment system (DSTS) that takes in the available wastewater from nearby residences, by tapping the sewer line, treats it biologically on the site and stores the resultant water in underground tanks for irrigation and running of fountains. The water channel is the central feature of the park as the whole park drains into it and the channel also functions as a conduit for transporting treated wastewater to the pond and sump.

General Design Category Award of Excellence

Ravi & Varsha Gavandi, Pune (GD-204)

Project: Zensar Technologies Ltd (IT Campus)
Location: Kharadi , Pune , Maharashtra
Client: Zensar Technologies Ltd
Start date: 2002
Completion date: 2008
Project Cost: 2.75 Crores
Total Area : 1.1 Acres



An international software company, Zensar Technologies, proposed its corporate office and development centre at Kharadi near Pune. The site is roughly a quadrilateral, measuring about 12 acres. One of the aims was to conserve the global corporate identity of the company and at the same time evolve a landscape which would be Indian in essence . Landscape design for Zensar is an attempt to carefully handle the issues of landscape imagery & sustenance while addressing functional agenda pertaining to the use of the space.

Jury's Comments

In the jury's assessment the conceptual and design inputs as well as maturity in development and execution were considered. The two winning entries scored higher than the others in this respect.

Entry No. GD-201 was recommended in recognition of its successful attempt at integrating sustainable practices in creative landscape design.

Entry No. GD-204 was distinguished by its sensitive and mature design approach as well as quality of execution. The jury appreciated the clarity of concept as well as presentation.

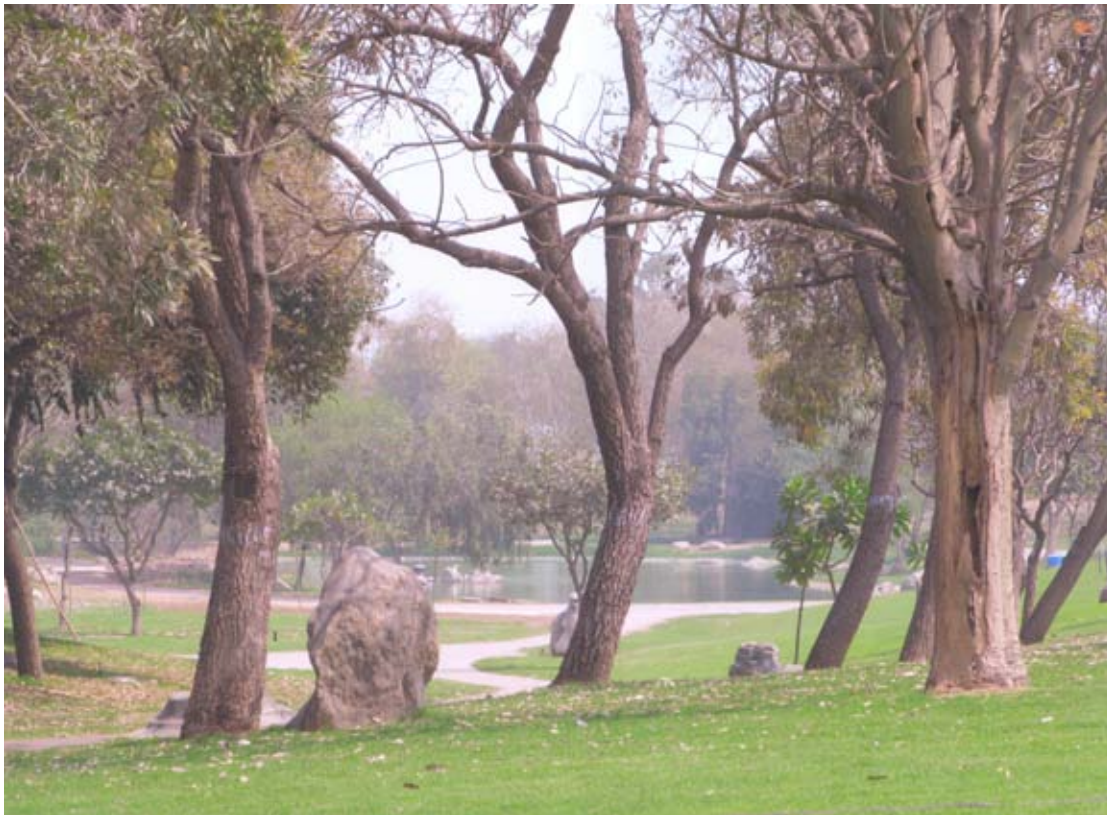
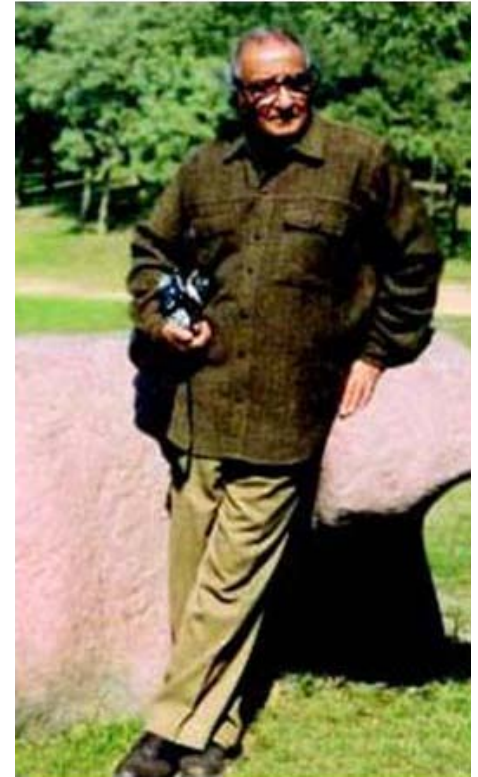
The Landmark Award

The award recognizes a distinguished landscape architecture project completed atleast 10 years ago that retains its original design integrity and contributes significantly to the public realms of the community in which it is located. The criteria for consideration was the project's sustained value to the community it serves and continued relevance of the project's design expression.

One entry was selected by the jury to receive the award of excellence in the Landmark award category.

Ravindra Bhan, New Delhi (LA-104)

Project:	Shakti sthal (Memorial)
Location:	New Delhi
Client:	Central Public Works Department (CPWD)
Start date:	1985
Completion date:	1989
Project Cost:	3 Crores
Total Area :	55 acres



Shakti Sthal literally “abode of energy” is the memorial of Late Prime Minister Indira Gandhi, and is located on the Eastern side of Delhi on the low-lying flood plains of river Yamuna. The project site of 55 acres lies between two existing memorials- Raj Ghat (Mahatma Gandhi) and Shanti Vana (Late Prime Minister Jawaharlal Nehru) on the fringes of Shahjahanabad.

While designing the memorial, the primordial elements of nature such as earth, rocks, trees and water have been used as the main design elements. There has been a conscious effort to impart a scientific & educational value to the memorial which has resulted in its being a unique geological park, first of its kind in the world representing the total geographical crust of India.

ISOLA Students' Award

The award honors the best students' thesis of the academic year 2008-09. One entry was selected by the jury to receive the award of excellence in the ISOLA students' award category.

Divya S G (SA-303)

**Thesis Topic: Study of Cultural Landscape and its impact on Socio-ecology of a Region
Palakkad Gap, Chittur**



Public well along with small tea shop at Village Junction



Natural Flood Plain- Public space used by all communities



Hay beating & drying- Space is usually associated with the Agriculture Community

The study is an attempt to bring forth values of a splintering civilization through understanding of the natural forces & the age old traditional systems, & hence find means to conserve the value of indigenous landscapes which in turn serves as means for upgradation of living standards of a community. A community which still urges to treasure their very own culture and customs, but due to economic, social and political reasons are compelled to migrate to other destinations.

Jury's Comments

In the jury's assessment all the entries in the Students' Award category were studies at Regional level which did not offer enough opportunity for students to present their design and creative abilities. The ISOLA awards committee should consider stipulating criteria which would overcome this shortcoming.

GENERAL COMMENTS FROM THE JURY



The jury appreciated the Institution of the Honors & Awards by ISOLA.

Considering the large number of Landscape Architects practising in the country, much better participation was expected, both from professionals as well as students.

It is suggested that wider publicity & coordination with chapters and institutions by ISOLA would help in ensuring larger participation.

In respect of the General Design category it is suggested that the period from the time of completion should be enhanced to three years instead of one so that the landscape is reasonably well established.

ACKNOWLEDGEMENTS

We would like to thank Journal of Landscape Architecture and FEED, Pune for references and images.